

The 1998 ASPET Otto Kraye Award Lecture

Fetal Nicotine or Cocaine Exposure: Which One is Worse?¹

THEODORE A. SLOTKIN

Department of Pharmacology and Cancer Biology, Duke University Medical Center, Durham, North Carolina

Accepted for publication March 24, 1998 This paper is available online at <http://www.jpet.org>

ABSTRACT

Despite extensive adverse publicity, tobacco use continues in approximately 25% of all pregnancies in the United States, overshadowing illicit drugs of abuse, including cocaine. The societal cost of maternal smoking is seen most readily in underweight newborns, in high rates of perinatal morbidity, mortality and Sudden Infant Death Syndrome and in persistent deficits in learning and behavior. We have designed animal models of nicotine exposure to prove that nicotine itself is a neuroteratogen, thus providing a causative link between tobacco exposure and adverse perinatal outcomes. In particular, nicotine infusion paradigms that, like the transdermal patch used in man, produce drug exposure without the confounds of other components of tobacco or of episodic hypoxic-ischemic insult, have enabled a mechanistic dissection of the role played by nicotine in fetal brain damage. Nicotine targets specific neurotransmitter receptors in the fetal brain, eliciting abnormalities of cell proliferation and differentiation, leading to shortfalls in the number of cells and eventually to altered synaptic activity. Because of the close regulatory association of cholinergic and catecholaminergic systems, adverse effects of nicotine involve multiple transmitter pathways and influence not only the immediate developmental events in fetal brain, but also the eventual programming of synaptic competence. Accordingly, defects may appear after a prolonged period of apparent normality, leading to cognitive and learning defects that appear in

childhood or adolescence. Comparable alterations occur in peripheral autonomic pathways, leading to increased susceptibility to hypoxia-induced brain damage, perinatal mortality and Sudden Infant Death. Identifying the receptor-driven mechanisms that underlie the neurobehavioral damage caused by fetal nicotine exposure provides a rational basis for decisions about nicotine substitution therapy for smoking cessation in pregnancy. In contrast to the effects of nicotine, animal models of crack cocaine use in pregnancy indicate a more restricted spectrum of effects, a reflection of differences both in pharmacokinetics and pharmacodynamics of the two drugs. Notably, although cocaine, like nicotine, also targets cell replication, its effects are short-lived, permitting recovery to occur in between doses, so that the eventual consequences are much less severe. To some extent, the effects of cocaine on brain development resemble those of nicotine because the two share cardiovascular actions (vasoconstriction) that, under some circumstances, elicit fetal hypoxia-ischemia. In light of the fact that nearly all crack cocaine users smoke cigarettes, the identification of specific developmental effects of cocaine may prove difficult to detect. Although scientists and the public continue to pay far more attention to fetal cocaine effects than to those of nicotine or tobacco use, a change of focus to concentrate on tobacco could have a disproportionately larger impact on human health.

A Tribute to Otto Kraye

Throughout the course of 40 years, Otto Kraye led a distinguished scientific career on three continents. Perhaps more importantly, he combined his scientific accomplishments with exemplary strength of character, at great cost to his professional and personal life. Awarded the M.D. degree from the University of Freiburg in 1926, Kraye became Professor Extraordinarius at the University of Berlin in

1932. Despite his noteworthy contributions to the German scientific community, the subsequent years found him in London and Beirut, before he was appointed to the faculty at Harvard University in 1937. He then remained at Harvard, serving as department chairman from 1939 to 1966, and as ASPET president in 1957. His ground-breaking research in cardiovascular pharmacology led to his being named the first recipient of the Torald Sollman Award in 1961. However, it is worth examining the curious turn of events that led him to this country. In modest fashion, Kraye himself described the events in his Sollman Award Address as follows: "In 1933, when the German universities had ceased to tolerate freedom

Received for publication March 24, 1998.

¹ Supported by USPHS HD-09713 and by a grant from the Smokeless Tobacco Research Council.

ABBREVIATION: SIDS, Sudden Infant Death Syndrome; CNS, central nervous system.

of expression, an invitation from the Department of Pharmacology of University College, London, brought me the privilege of working with one of Starling's pupils, E.B. Verney." What he did not say was that his departure from Germany was triggered by his refusal to accept the Chair of Pharmacology in Düsseldorf, a position that had been opened by the forced expulsion of a Jewish scientist. At that time, Krayer, at considerable personal risk, wrote a letter to the Minister of Education, saying, "The exclusion of Jewish scientists [is] an injustice, the necessity of which I cannot understand. . . The work to which I have heretofore dedicated all my strength, means so much to me that I could not compromise it with the least bit of dishonesty. I therefore prefer to forego this appointment, rather than having to betray my convictions." As a consequence, he was dismissed from his professorship and banned from accepting any positions at German universities.

In light of these events, as well as his scientific accomplishments, I feel deeply honored to receive the award named for Otto Krayer, and I thank ASPET, the award selection committee and Zeneca Pharmaceuticals for the privilege of delivering this address. It must be remembered that any scientific effort requires the participation of many individuals, and I am indebted to the many outstanding students and fellows who have worked with me during the past three decades, and especially to Dr. Frederic Seidler, who has assisted me throughout most of that period. Our research has focused on the pharmacology and toxicology of nervous system development, most especially on the trophic roles of neurotransmitters and neuroactive drugs, the development of autonomic function and its role in fetal and neonatal homeostasis and the adverse effects of environmental contaminants and drugs of abuse. For this presentation, I will concentrate on the aspect of our work that has had the most visible impact on human health, the characterization of fetal nicotine exposure and its relationship to smoking in pregnancy.

Unique Developmental Roles of Neurotransmitters

It is more than 30 years since Buznikov first reported that a wide variety of neurotransmitters could be identified and found in high concentration in developing sea urchin embryos (Buznikov *et al.*, 1964, 1970). Since that time, numerous investigations have characterized the transient appearance of these substances in developing organisms and most prominently during ontogeny of the mammalian nervous system. The phenotypic expression of the ability to manufacture neurotransmitters or their receptors is a common feature of developing cells and even occurs in nonneuronal cells, in which it is now clear that transmitter chemicals play roles outside the realm of classical synaptic communication (Lauder, 1985; Whitaker-Azmitia, 1991). The basic difference between developing and nondeveloping systems is that, in the latter, input to a target cell elicits a short-term response and continued stimulation elicits compensatory adjustments that offset stimulation (desensitization or receptor down-regulation). During development, however, receptor stimulation uniquely communicates with the genes that control cell differentiation, changing the ultimate fate of the cell, so that there are permanent alterations in responsiveness (fig. 1). Because these types of changes are not characteristic of the mature nervous system, it is evident that the ontogenetic

Neurotransmitter Signals Control Cell Fate

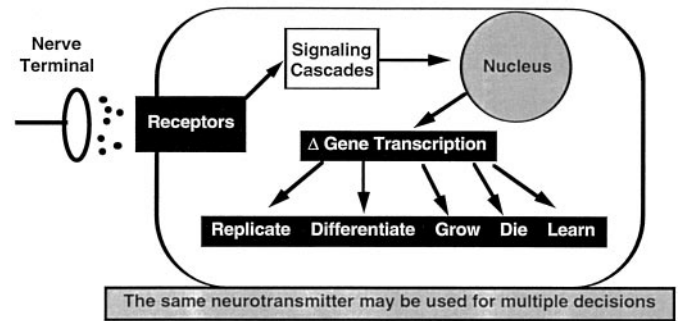


Fig. 1. Schematic representation of the linkage of neurotransmitters to cell development. During specified critical periods, neurotransmitter receptors and their associated signaling cascades can elicit changes in gene expression that influence differentiation. Depending on the context in which stimulation occurs, the same neurotransmitter, operating through the same receptors, can promote cell replication, can elicit a switch from replication to differentiation, can promote or arrest cell growth, can evoke apoptosis or can program the genes that determine the future responsiveness of the cell to external stimulation (cell learning).

state of the target cells is pivotal in determining the outcome. Accordingly, the same transmitter or receptor may be involved in cell replication, in termination of replication and initiation of differentiation, in cell growth, in cell death (apoptosis) or in determination of the ability of the cell to respond to future stimulation (cell learning). As just one example, small amounts of norepinephrine, acting at *beta* adrenergic receptors in fetal and early neonatal rat tissues, serve to promote cell acquisition (Slotkin *et al.*, 1988a, b; Duncan *et al.*, 1990; Renick *et al.*, 1997). Later on, much higher levels of stimulation, operating through the same *beta* receptors, serve to terminate cell replication and to determine the set-point for adrenergic reactivity that will persist into adulthood (Slotkin *et al.*, 1987d, 1988c; Hou *et al.*, 1989a, b; Duncan *et al.*, 1990; Wagner *et al.*, 1991, 1994, 1995). It is thus not just the transmitter and receptor, but also the developmental context in which stimulation occurs, that determine the net effect on the fate of the target cell.

The case of fetal nicotine exposure thus occupies two different frameworks. First, nicotine stimulates a specific population of cholinergic target sites, the nicotinic cholinergic receptors, and thus can be expected to recapitulate many of the roles of acetylcholine as a neurotrophic factor (Hohmann *et al.*, 1988; Navarro *et al.*, 1989a; Spitzer, 1991; Wessler *et al.*, 1998). However, nicotine is a drug of abuse and thus fetal exposures can be expected to involve levels of stimulation beyond those experienced in the course of normal development, and equally important, will involve exposure outside of the proper ontogenetic context. Before describing our work on these effects and their underlying mechanisms, it is worthwhile to review the societal impact of nicotine as a drug of abuse in pregnancy.

Smoking and Pregnancy

Despite decades of adverse publicity, approximately one-fourth of all women in the United States continue to smoke during pregnancy (Bardy *et al.*, 1993; DiFranza and Lew, 1995). Potentially encouraging news, such as a recent lay press account that smoking during pregnancy had been cut

in half, is deceptive because of reliance on self-reportage of cigarette use, which is notoriously unreliable. Controlled examinations of plasma, urine or hair markers of smoking demonstrate clearly that most pregnant smokers do not quit (Bardy *et al.*, 1993). The consequences have been well identified in epidemiological studies: tens of thousands of spontaneous abortions and neonatal intensive care unit admissions annually, thousands of perinatal deaths and deaths from Sudden Infant Death Syndrome (SIDS) and substantially increased risk of learning disabilities, behavioral problems and attention deficit and hyperactivity disorder (Butler and Goldstein, 1973; Dunn and McBurney, 1977; Naeye, 1978, 1992; Naeye and Peters, 1984; Bell and Lau, 1995; DiFranza and Lew, 1995). Nevertheless, both the press and the medical community continue to regard tobacco as separate from, and less serious than, illicit drugs of abuse. A survey of the most prominent medical pharmacology texts in use in the United States showed that more than 80% of the pages devoted to substance abuse concerned illicit drugs, just more than 10% concerned alcohol and less than 5% concerned tobacco (Ginzel, 1985). In contrast, illicit drugs account for only a handful of deaths annually, alcohol 50,000 and tobacco 400,000. Public and medical bias against considering tobacco as equivalent in importance to illicit drugs continues into the realm of studies of development. Headlines concentrate on "crack baby" syndrome, a condition for which there is no current medical consensus of opinion (Coles, 1993; Day and Richardson, 1993), whereas tobacco use during pregnancy receives little or no attention. The same bias can be demonstrated simply by examining the annual publication rate for papers on fetal or neonatal development, comparing cocaine with nicotine (fig. 2). Cocaine is the subject of three to four times the number of papers as nicotine. Indeed, a recent study showed that public perception of the adverse effects of cocaine in pregnancy goes far beyond the actual potential for fetal damage; many physicians think that cocaine is an outright teratogen akin to thalidomide and have counseled abortion even when the patient does not seek one (Koren *et al.*, 1992). In actuality, cocaine is less likely to cause malformations than is cigarette smoking (Koren, 1993; Neuspiel, 1993). We also have been barraged by alarming figures for cocaine use in pregnancy, typically listed as high as 20% of all pregnancies for urban hospitals (Spear and Heyser, 1992). However, when blind screenings are conducted at private

clinics, the rate becomes vanishingly small (Burke and Roth, 1993). The realities are that cigarette smoking continues to involve a much larger population than does cocaine, and furthermore, that nearly all crack users smoke cigarettes (Budney *et al.*, 1993; Higgins *et al.*, 1994), so that purported effects of cocaine must be examined in comparison with smokers, not with substance-free subjects. It is thus necessary to perform controlled studies to answer the essential question of whether the effects of fetal nicotine exposure are worse than those of cocaine.

Designing an Animal Model of Fetal Nicotine Exposure

Given the adverse effects of smoking in pregnancy, why do we need to perform animal studies to isolate the specific effects of nicotine? There are three important issues that can be resolved only with animal research. First, what is it about smoking that injures the developing organism? As shown in figure 3, maternal smoking produces three different families of potential effects: actions of nicotine in the fetus, whether on brain development or general development; actions on the maternal-fetal unit, including episodic hypoxia-ischemia, exposure to other toxic smoke products (notably CO and HCN) (Mactutus and Fechter, 1986) and dietary restriction from the anorexic effects on the mother; and the epiphenomena of smoking, namely risky behaviors, co-abuse of other substances, poor prenatal care and low socioeconomic status. To assign a specific, deleterious role for smoking itself, studies must be designed that eliminate the potential covariables of smoking that can themselves influence perinatal outcome. The second reason to study the specific effects of nicotine concerns the now-common use of this drug for smoking cessation. If nicotine itself is injurious to the developing organism, then issues of dose, pharmacokinetics and critical period all become essential elements in smoking cessation strategies during pregnancy. Finally, from the basic scientist's viewpoint, a demonstration of nicotine effects on specific processes of cell development, in turn, can help identify how acetylcholine, acting as a neurotrophic chemical during development, controls the fate of its target cells.

In our initial work on this problem, we injected nicotine in pregnant rats throughout gestation, a strategy that had been used in behavioral studies to establish empirically that nicotine could disrupt development (Martin and Becker, 1970, 1971; Nasrat *et al.*, 1986). Although we obtained clear evidence of cell damage in the fetal brain, including compromised development of neurotransmitter systems that could account for the behavioral deficits (Slotkin *et al.*, 1986b,

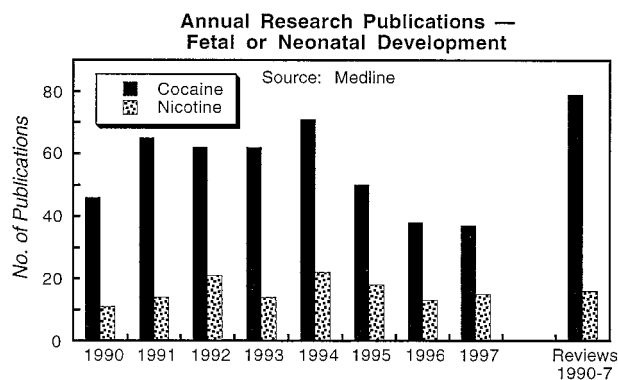


Fig. 2. Annual research publications on cocaine or nicotine and fetal or neonatal development. Yearly totals show primary papers and review articles and the right-hand bars reflect review articles published in the 1990s to date.

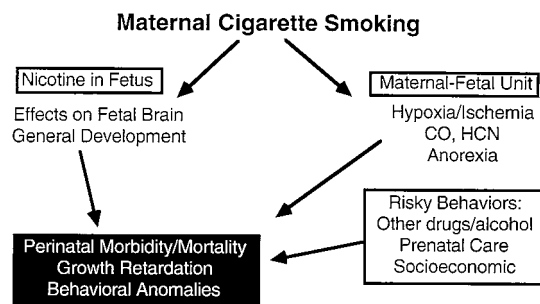


Fig. 3. Variables contributing to adverse perinatal outcomes from maternal cigarette smoking.

1987a, b), it quickly became evident that many of these effects resembled those of episodic hypoxia (Jonsson and Hallman, 1980; Slotkin *et al.*, 1986a; Seidler and Slotkin, 1990; Carlos *et al.*, 1991). This is not surprising, given that nicotine injections produce high peak plasma levels of drug, which induce obvious ischemic episodes (blanching, cyanosis) with each dose (McFarland *et al.*, 1991; Slotkin, 1992). In designing animal models of cigarette smoking, this may not be an unreasonable approach, given that the fetus also experiences hypoxia-ischemia during each cigarette. However, to identify the effects of nicotine itself in the fetus, such models are confounded ineluctably by hypoxia-ischemia (fig. 4). Accordingly, in the mid-1980s we developed the first animal model of fetal nicotine exposure to make use of continuous infusions *via* implantable osmotic minipumps (Slotkin *et al.*, 1987b, c; Navarro *et al.*, 1988, 1989a, b; Slotkin, 1992). By administering nicotine on a continuous basis, we can avoid peak levels that elicit hypoxia-ischemia and can deliver a clearly identifiable, fixed dose of drug akin to that provided by the transdermal nicotine patches used in humans (Murrin *et al.*, 1987; Lichtensteiger *et al.*, 1988). Another advantage of the infusion method is that steady-state plasma levels can be assessed and the dose rate adjusted to simulate human exposure levels. A typical infusion rate of 6 mg/kg/day in rats produces plasma levels at the upper limit of those achieved in heavy smokers, whereas 2 mg/kg/day simulates moderate smoking (Murrin *et al.*, 1987; Lichtensteiger *et al.*, 1988). It also should be noted that there are pharmacodynamic differences between rats and man, with higher doses generally required to elicit the same effects in the rat (Barnes and Eltherington, 1973; Lichtensteiger *et al.*, 1988). Accordingly, levels at the upper range of human exposures are probably the most appropriate in simulating fetal nicotine effects.

With the nicotine infusion model, we performed several studies to demonstrate conclusively that nicotine, without the participation of other confounding factors of smoking, causes fetal resorption and brain cell damage in the offspring (Slotkin *et al.*, 1987b, c; Navarro *et al.*, 1988, 1989b; Slotkin, 1992). A key indicator of cell damage, ornithine decarboxyl-

ase activity, is elevated in the postnatal period throughout neurogenesis and synaptogenesis (fig. 5). Equally important, the effects are present in early-developing regions (cerebral cortex) as well as in regions that undergo neurogenesis much later (cerebellum). Coincidentally with the activation of cell damage markers, deficits appear in regional DNA content; because each brain cell has a single nucleus, reductions in DNA content indicate a diminished cell number. Although cell deficits are apparent in the immediate postpartum period, an unusual feature of nicotine's effects is that cell numbers actually continue to decline during the first 2 weeks postpartum, well after the termination of nicotine exposure. This suggests that nicotine initiates a change in the program for cell development, leading ultimately to cell loss. Recently (Slotkin *et al.*, 1997a), we found that the protooncogene, *c-fos*, is constitutively activated in postnatal brain regions after prenatal nicotine exposure (fig. 6). Constitutive overexpression of *c-fos*, even in an otherwise healthy cell, elicits apoptosis, an effect which stands in distinction from the short-term activation that accompanies increased cell metabolism (Smeyne *et al.*, 1993; Miao and Curran, 1994; Curran and Morgan, 1995; Preston *et al.*, 1996). Indeed, the chronic elevation of *c-fos* caused by fetal nicotine exposure occurs at a time when acute nicotine is unable to increase *c-fos* activity (Slotkin *et al.*, 1997a). It is therefore likely that apoptosis contributes to brain cell loss caused by fetal nicotine exposure. DNA content eventually recovers in some brain regions (Slotkin *et al.*, 1987c), but the catch-up phase occupies the time frame after the closure of neurogenesis and during gliogenesis, which suggests that neurons have been replaced with glia, a typical pattern for neurotoxic compounds (Norton *et al.*, 1992; O'Callaghan, 1993; Guerri and Renau-Piqueras, 1997). The neuronal damage caused by fetal nicotine is thus likely to be irreversible.

The outright loss of cells does not in itself substantiate the existence of neurobehavioral abnormalities, which instead require that alterations ultimately influence synaptic function. Because nicotine works on a specific subset of cholinergic receptors, the most obvious starting point is to examine the effects on cholinergic synaptic function. We and others have found that fetal nicotine exposure up-regulates nicotinic receptor binding sites in the brain, with effects persisting into the early neonatal period (Hagino and Lee, 1985; Slotkin *et al.*, 1987b; Van de Kamp and Collins, 1994). During this phase, cholinergic trophic responses of the targeted cells are correspondingly supersensitive (Slotkin *et al.*, 1991), an effect which continues through early synaptogenesis, when cholinergic input programs structural and functional developmental events (Hohmann *et al.*, 1988; Navarro *et al.*, 1989a). This may provide an underlying mechanism for cell loss as well as synaptic abnormalities. In addition to changing reactivity to cholinergic stimulation, fetal nicotine exposure alters the ontogeny of cholinergic tone as assessed with choline acetyltransferase activity and high-affinity choline uptake (Navarro *et al.*, 1989a; Zahalka *et al.*, 1992). These two biomarkers measure different properties of cholinergic neurons. Choline acetyltransferase is a constitutive component of the nerve terminal, but its activity is not rate-limiting in transmitter synthesis and is not regulated by impulse activity (Cooper *et al.*, 1986). In contrast, the presynaptic, high-affinity choline transporter actually controls acetylcholine biosynthesis and is directly responsive to the rate of

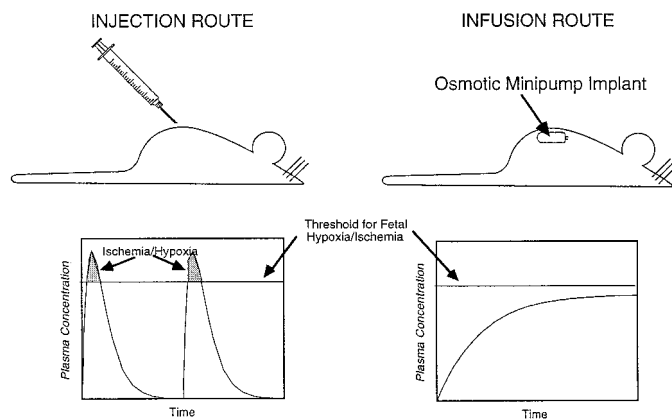


Fig. 4. Two different approaches to animal models of nicotine administration. The injection route produces peak plasma levels that exceed the threshold for fetal hypoxia-ischemia, with episodic recovery in between doses. Similar events occur in cigarette smoking, which superimposes the effects of nicotine on episodic hypoxia-ischemia. The infusion route, *via* minipump implants, produces a steady-state plasma level that can be adjusted to fall below the threshold for fetal hypoxia-ischemia and that can maintain levels found in smokers. Infusions closely resemble human exposures *via* transdermal nicotine patches.

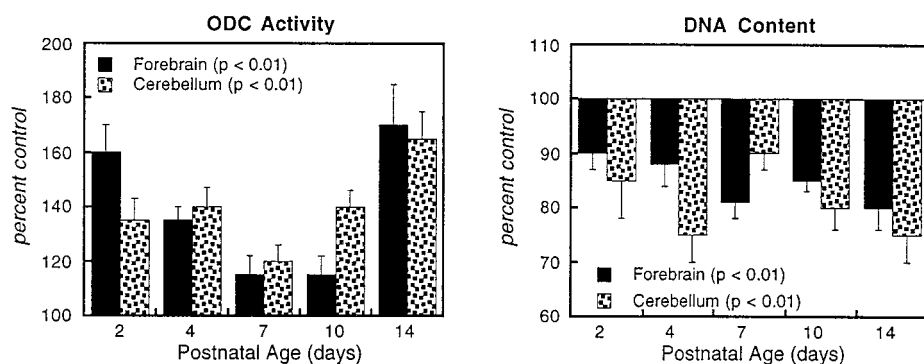


Fig. 5. Effects of nicotine infusions throughout gestation on biomarkers of cell damage (ornithine decarboxylase activity, ODC) and cell number (DNA content) evaluated in postnatal rat brain (Slotkin *et al.*, 1987c). Nicotine exposure elicits persistent damage and cell loss despite discontinuation of nicotine exposure at birth. Effects are discernible in both an early-developing region (forebrain) and late-developing region (cerebellum).

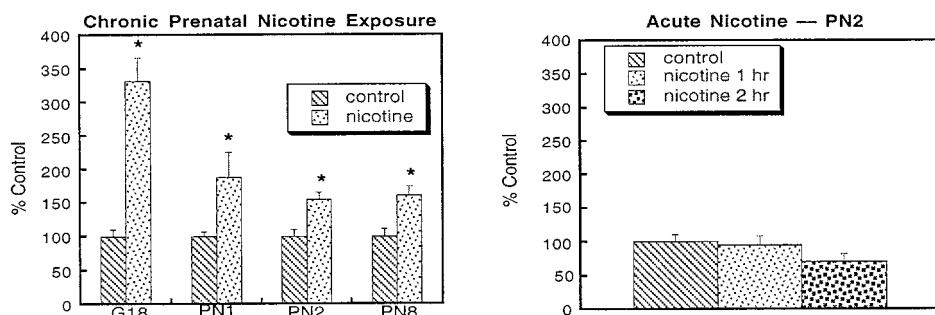


Fig. 6. Persistent elevation of *c-fos* mRNA in the forebrain during and after gestational nicotine exposure, measured on gestational day 18 and during the first postnatal week (Slotkin *et al.*, 1997a). Constitutive *c-fos* overexpression, suggestive of apoptosis, can be detected more than a week after discontinuing nicotine. The persistent effect is distinct from the ability of a single dose of nicotine to elicit short-term metabolic activation of *c-fos*, which has not yet developed by postnatal day 2.

neuronal stimulation (Simon *et al.*, 1976; Klemm and Kuhar, 1979; Murrin, 1980). Taking the ratio of these two markers thus provides an index of the net impulse activity per nerve terminal, an approach that has proved successful in evaluating cholinergic function in developing brain and in neurodegenerative disorders such as Alzheimer's Disease (Shelton *et al.*, 1979; Navarro *et al.*, 1989a; Slotkin *et al.*, 1990b; Zahalka *et al.*, 1992).

With the ratio method (Navarro *et al.*, 1989a) we found that cholinergic tone does not develop monotonically from low to high activity, but rather that there is a peak of activity centered around postnatal day 10 in the forebrain (fig. 7). In animals exposed to nicotine prenatally, this peak of activity is blunted. Similarly, in the hippocampus, prenatal nicotine elicits lasting deficiencies in choline transporter expression, assessed by binding of the specific transporter radioligand [³H]hemicholinium-3, again indicative of suppressed synaptic activity (Zahalka *et al.*, 1992). These presynaptic defects are compounded further by decreases in postsynaptic cholinergic mechanisms (Zahalka *et al.*, 1993). It is thus evident that underlying defects in synaptic function can be identified readily to account for behavioral disruption by fetal nicotine exposure.

Nicotinic cholinergic receptors are involved intimately in the regulation of catecholaminergic function in the CNS, so it is not surprising that noradrenergic and dopaminergic synaptic transmissions also are affected adversely by fetal nicotine exposure (Navarro *et al.*, 1988, 1989b; Seidler *et al.*, 1992b). Just as for cholinergic systems, we found hypoactivity in noradrenergic and dopaminergic projections and although apparent recovery occurs by 3 weeks of age, there is a subsequent, persistent deficit (fig. 8). Just before the reappearance of subnormal tonic activity, acute challenge with nicotine fails to release any neurotransmitter in the prenatal nicotine group, which confirms functional subsensitivity to exogenous stimulation.

We have identified a host of defects in postsynaptic signaling mechanisms evoked by prenatal nicotine exposure, all of which are likely to contribute to adverse behavioral outcomes. These include lasting up-regulation of the expression of adenylyl cyclase, leading to heterologous sensitization of some cell populations to a wide variety of neural, hormonal and trophic inputs (Slotkin *et al.*, 1990a, 1992); specific uncoupling of G-protein mechanisms linking muscarinic and *beta* adrenergic receptors to downstream cellular events (Navarro *et al.*, 1990a; Zahalka *et al.*, 1993); and alterations in

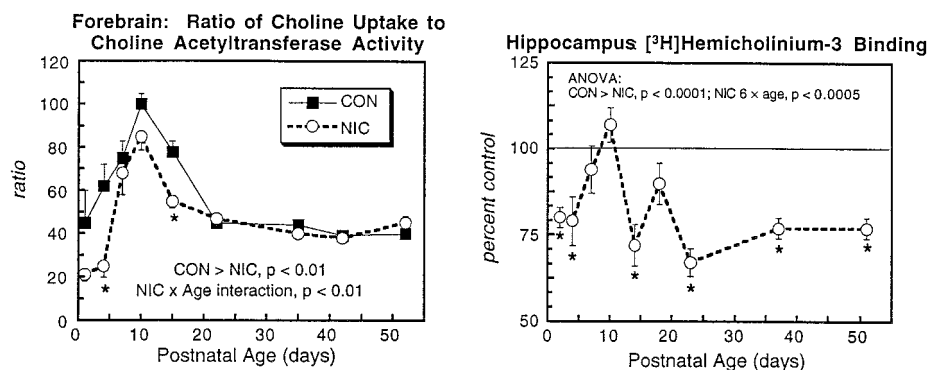


Fig. 7. Cholinergic hypoactivity elicited by prenatal nicotine exposure. In the forebrain, the ratio of choline uptake to choline acetyltransferase activity (a biochemical marker of impulse activity) shows a naturally occurring peak at postnatal day 10; nicotine blunts activity before and during the developmental spike (Navarro *et al.*, 1989a). In the hippocampus, [³H]hemicholinium-3 binding to the high-affinity choline transporter, which is regulated by nerve impulse activity, shows both initial postnatal deficits and a later-emerging, permanent deficit in the nicotine group (Zahalka *et al.*, 1992). CON, control; NIC, nicotine; ANOVA, analysis of variance.

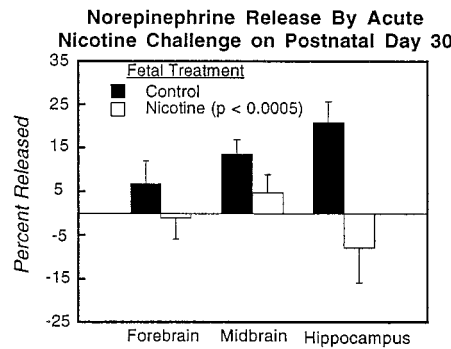
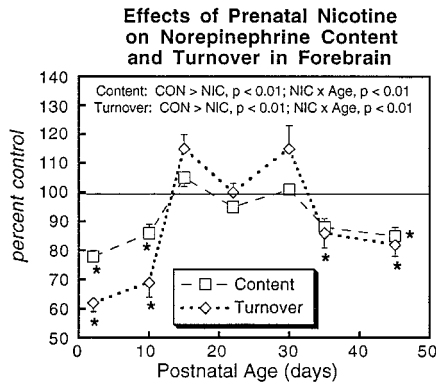


Fig. 8. Noradrenergic hypoactivity elicited by prenatal nicotine exposure. Norepinephrine content and turnover are suppressed in the nicotine group, involving both the initial postnatal period, and after a transient recovery to normal, a secondary period of persistent hypoactivity (Navarro *et al.*, 1988). Before the reemergence of deficits in the measures of basal activity, the nicotine group shows a subnormal responsiveness to acute challenges. A single injection of nicotine, which releases norepinephrine in the control group, fails to do so in the nicotine group (Seidler *et al.*, 1992b). CON, control; NIC, nicotine.

the ontogenetic patterns of cholinergic and catecholaminergic neurotransmitter receptors (Slotkin *et al.*, 1987b, 1990a; Navarro *et al.*, 1990a, b; Zahalka *et al.*, 1993). Developmental disruption by nicotine may thus occupy several different planes, ranging from outright cell loss to specific alterations of neural activity, to misprogramming of signaling molecules. Although it might be feasible to continue describing all these alterations, a more important set of issues concerns whether the basic origin of disrupted development lies in inappropriate nicotinic receptor stimulation in the fetal brain, and whether such effects occur at exposure levels that are otherwise thought to be safe.

Developmental Targeting of Nicotinic Cholinergic Receptors

In sorting out the variables of maternal smoking that contribute to adverse perinatal outcomes, an underlying, receptor-mediated mechanism stands out as an essential feature for the involvement of nicotine. For most standard fetotoxins, brain maturation is maintained at all possible cost to other ontogenetic processes ("brain sparing") (Dodge *et al.*, 1975; de Grauw *et al.*, 1986; Bell *et al.*, 1987). Accordingly, low birth weight is usually considered to be an adequate predictor of potential neural damage, a concept reflected by the Surgeon General's warning that smoking can produce "fetal injury, premature birth, and low birth weight." However, our animal studies indicate otherwise: doses of nicotine that simulate plasma levels found in moderate smokers and that do not cause growth retardation are nevertheless fully capable of affecting brain development as indicated by markers for cell damage and loss and synaptic dysfunction (Navarro *et al.*, 1989b; Seidler *et al.*, 1992b; Zahalka *et al.*, 1992, 1993; Slotkin *et al.*, 1997a) (fig. 9). Behavioral studies confirm that

neurobehavioral teratogenesis by nicotine occurs at doses that are not growth-impairing (Lichtensteiger and Schlumpf, 1985; Ribary and Lichtensteiger, 1989; Levin *et al.*, 1993, 1996; Cutler *et al.*, 1996). There are two corollaries to these findings. First, the standard marker of birth weight is inadequate to predict the presence or absence of brain damage from nicotine, and second, an extremely sensitive process must underlie the exquisite vulnerability of the developing brain to nicotine. This mechanism is obviously the existence of specific receptors for nicotine that respond to pharmacologically relevant concentrations of the drug that are not otherwise fetotoxic. The presence of nicotinic receptors in fetal brain has been well established both biochemically and morphologically (Hagino and Lee, 1985; Larsson *et al.*, 1985; Lichtensteiger *et al.*, 1987; Slotkin *et al.*, 1987b; Cairns and Wonnacott, 1988). Moreover, we have shown that these receptors are tonically stimulated by fetal nicotine exposure as evidenced by receptor up-regulation (Slotkin *et al.*, 1987b). Importantly, dose regimens of nicotine that do not impair growth still fully up-regulate nicotinic receptors in fetal brain, which explains why neuronal effects exhibit a lower threshold than low birth weight (Navarro *et al.*, 1989b).

To understand how stimulation of nicotinic receptors disrupts target cell development we need to return to the general scheme relating neurotransmitter input to cell fate (fig. 1). In fetal development, one of the most prominent features is cell replication, which generally ceases as differentiation proceeds, events that are controlled partly by neurotransmitter-induced stimulation (Claycomb, 1976; Slotkin *et al.*, 1987a, 1988c; Duncan *et al.*, 1990; McFarland *et al.*, 1991). In our model, then, fetal nicotine exposure results in the premature elicitation of the natural trophic functions of acetylcholine at its target cells, namely the switch from replication

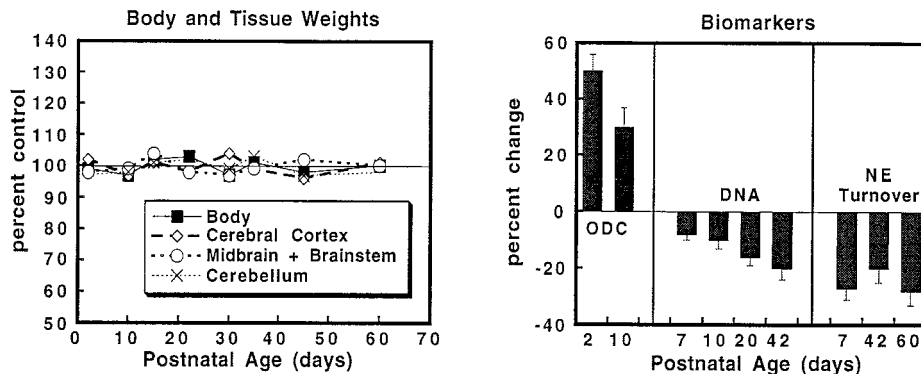


Fig. 9. Demonstration that nicotine damages the developing brain at dose levels that do not compromise growth or general development (Navarro *et al.*, 1989b; Seidler *et al.*, 1992b; Slotkin, 1992). Administration of 2 mg/kg/day to pregnant rats, which simulates plasma levels of nicotine found in moderate smokers, results in normal body and brain region weights in the offspring. Nevertheless, cell damage (elevated ornithine decarboxylase activity [ODC]), cell loss (reduced DNA content) and synaptic hypoactivity (subnormal norepinephrine [NE] turnover) are still fully evident.

to differentiation (McFarland *et al.*, 1991). Within 30 min of exposure to a single dose of nicotine, and persisting for several hours, DNA synthesis is inhibited in fetal and neonatal brain regions, with a rank order corresponding to the concentration of nicotinic receptors, namely brainstem \geq forebrain $>$ cerebellum (fig. 10). The effects are mediated directly by nicotine acting within the brain, as confirmed by direct injection of minute amounts of nicotine directly into the CNS. Furthermore, effects are restricted to the macromolecule synthesis associated with cell replication, because there are no comparable changes in protein synthesis, which is common to both mitotic and postmitotic cells. In keeping with this view, other manipulations that promote cholinergic activity in the fetus, such as dietary choline supplementation, produce similar defects (Bell and Lundberg, 1985; Bell and Slotkin, 1985; Bell *et al.*, 1986a, b). These findings thus reveal a major reason for disruption of brain development by low doses of nicotine, namely the premature stimulation of a receptor-mediated process that normally controls the timing of cell replication and differentiation. Accordingly, there is little doubt that nicotine is a potent neuroteratogen whose actions account in large measure for the adverse effects of maternal cigarette smoking on subsequent behavior and neural performance in the offspring. The conclusion is inescapable that smoking itself, and not the ancillary epiphenomena of smoking, is responsible for tens of thousands of perinatal deaths and for like numbers of infants whose debilities may range from outright brain damage to subtle cognitive defects.

Nicotine as a Factor in Perinatal Mortality and SIDS

The targeting of nicotinic receptors has consequences for fetal development that extend beyond the central nervous system. Autonomic ganglia and the adrenal medulla also contain nicotinic receptors and in these cells receptor-induced depolarization plays the same role in replication and differentiation as in brain (Black and Geen, 1973; Black *et al.*, 1976; Black and Mytilneou, 1976; Rosenthal and Slotkin, 1977; Bareis and Slotkin, 1978; Cochar *et al.*, 1979; Black, 1980; Lawrence *et al.*, 1981; Seidler and Slotkin, 1986b). We

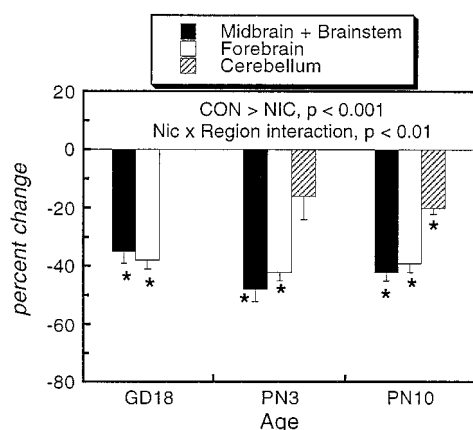


Fig. 10. Inhibition of DNA synthesis in rat brain regions after a single dose of nicotine (McFarland *et al.*, 1991; Slotkin, 1992; Tolson *et al.*, 1995). Measurements of [3 H]thymidine incorporation into DNA were made in the first 30 min after nicotine administration. Susceptibility is directly related to the concentration of nicotinic cholinergic receptors in each region, namely brainstem \geq forebrain $>$ cerebellum. CON, control; NIC, nicotine. ANOVA, analysis of variance; CON, control; NIC, nicotine.

have used this relationship to develop an animal model of perinatal mortality and SIDS that accounts for their strong statistical association with maternal smoking (Slotkin *et al.*, 1995). Defective neonatal cardiovascular and/or respiratory control are postulated to underlie SIDS, with the agonal event precipitated by an acute episode of hypoxia, either from airway obstruction or from an excessive period of sleep apnea (Hunt and Brouillette, 1987; Stramba-Badiale *et al.*, 1992; Poets *et al.*, 1993; Southall *et al.*, 1993). The physiological processes that are called into play during hypoxia are the same as those that accompany the hypoxia experienced during parturition (Seidler and Slotkin, 1985, 1986a, b; Lagercrantz and Slotkin, 1986; Sylvia *et al.*, 1989; Kauffman *et al.*, 1994; Slotkin *et al.*, 1995). In terms of the maintenance of cardiac function, survival during fetal or neonatal hypoxia relies on a unique series of mechanisms centered around autonomous secretion of adrenal catecholamines (Seidler and Slotkin, 1985, 1986a, b; Lagercrantz and Slotkin, 1986; Kauffman *et al.*, 1994; Slotkin *et al.*, 1995), the presence of atypical adrenergic receptor populations in the myocardium (Drugge *et al.*, 1985; Lin *et al.*, 1992; Kauffman *et al.*, 1994) and the presence of isoforms of myosin that are adapted to contraction with low oxygen supplies (Bian *et al.*, 1992; Schachat *et al.*, 1995). It is therefore of critical importance that animals exposed prenatally to nicotine lack the autonomous adrenomedullary secretory response (Slotkin *et al.*, 1995), and that this occurs in conjunction with a reduction in stimulatory β adrenergic receptors in the myocardium and a reduced cardiac response to adrenergic stimulation (Navarro *et al.*, 1990a). Upon exposure to an hypoxic environment normal rats can secrete nearly 40% of the entire catecholamine content of the adrenal, whereas nicotine-exposed offspring secrete virtually no catecholamines (fig. 11). The consequences for cardiac regulation can be seen immediately: control rats show a slight cardioacceleration during hypoxia, followed by a slight decline in heart rate; with prenatal nicotine treatment, heart rate declines immediately and precipitously in a low-oxygen environment (Slotkin *et al.*, 1997b). Consequently, the nicotine group experiences increased mortality during an extended period of hypoxia (Slotkin *et al.*, 1995).

The absence of an adrenomedullary response to hypoxia is likely to be the most important deficiency in autonomic function after nicotine exposure. The fetal and neonatal heart do not possess fully competent neural connections and thus are dependent on circulating catecholamines for stimulation (Slotkin, 1986). The loss of adrenal responsiveness does not represent an inability to release catecholamines in general because direct depolarization evokes secretion in both control and nicotine groups (Slotkin *et al.*, 1995). It is thus necessary to understand how the immature adrenal operates to explain why prenatal nicotine exposure interferes with its response. As shown in figure 12, the immature adrenal is not innervated functionally but nevertheless responds to specific stimuli, notably hypoxia, with a response that far exceeds the adrenomedullary secretory capabilities of the adult. This direct mechanism for catecholamine release disappears upon differentiation of the chromaffin cells, triggered normally by the development of splanchnic nerve function and the consequent nicotinic cholinergic depolarization of the cells (Seidler and Slotkin, 1986b). In the normal course of development, then, the organism is protected from hypoxia because secre-

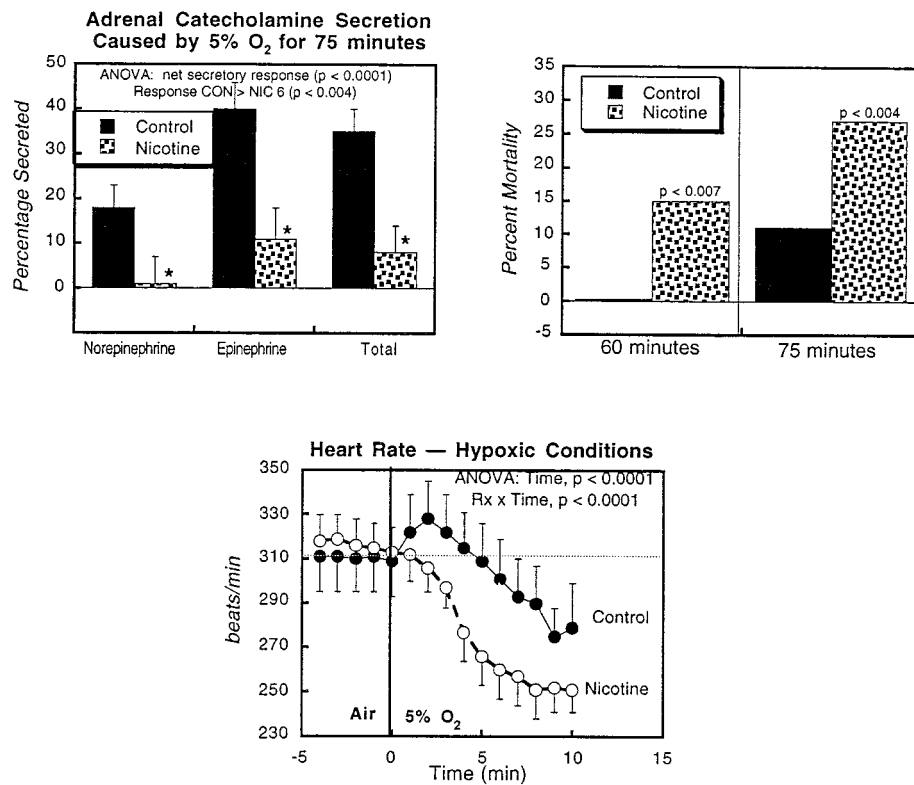


Fig. 11. Peripheral defects evoked by prenatal nicotine exposure that contribute to hypoxia intolerance (Slotkin *et al.*, 1995, 1997b). Low oxygen conditions elicit massive adrenal catecholamine release in 1-day-old control rats but no release occurs in animals exposed to nicotine prenatally. As a result, the nicotine group shows elevated mortality during hypoxia. The effects on cardiac function are evident within the first few minutes after initiation of low oxygen conditions: control rats show an initial increase in heart rate followed by a gradual decline to stable levels, whereas the nicotine group shows an immediate, precipitous decline in heart rate.

tory responses can occur by a direct response mechanism before the onset of innervation, and this ability is not lost until reflex control takes over (Seidler and Slotkin, 1985, 1986b; Mojet *et al.*, 1997). With fetal nicotine exposure, however, the cells receive cholinergic stimulation triggered by the drug itself, well in advance of the development of reflex autonomic control of the adrenal (Rosenthal and Slotkin, 1977; Bareis and Slotkin, 1978). Stimulation promotes the differentiation of the chromaffin cells, resulting in a premature loss of the direct secretory mechanism, opening a window of vulnerability in which there is no protection from hypoxia whatsoever. Thus, the same receptor-driven mechanism that targets specific sites within the CNS also serves to account for alterations in the periphery that compromise physiological competence.

These studies, along with additional work we have conducted on nicotine-induced changes in central respiratory control mechanisms (Slotkin *et al.*, 1995, 1997b), provides the first mechanistic proof of the epidemiological association between maternal smoking and perinatal morbidity and mortality associated with birth trauma. In light of the role of similar physiological adaptations required for surviving hypoxia during the first year of postnatal life, they also account for the relationship of smoking to SIDS (Kandall and Gaines, 1991; Milerad and Sundell, 1993; DiFranza and Lew, 1995; Cnattingius and Nordstrom, 1996), including the reasons why the critical window for SIDS eventually closes, namely when reflex control finally develops. Because the fetal environment is ordinarily relatively hypoxic (Nijland *et al.*, 1995), these events may account for the high incidence of fetal loss as a result of smoking during pregnancy.

Fetal Cocaine Exposure: A Comparison with Nicotine

Cocaine shares several essential characteristics with nicotine. Both are vasoconstrictors that converge on adrenergic neurotransmission as their underlying mechanism, nicotine by evoking catecholamine release and cocaine by preventing presynaptic uptake of catecholamines, thus intensifying their actions. Consequently, cocaine, like nicotine, is capable of evoking acute episodes of fetal hypoxia-ischemia (Mahalik *et al.*, 1984). Moreover, both cocaine and nicotine are anorexic drugs and thus influence the maternal nutritional state. A schematic for cocaine's impact on fetal development would resemble that of nicotine (fig. 3), without the participation of tobacco byproducts, but with much heavier emphasis on risky behaviors, poor prenatal care and socioeconomic status. Perhaps most importantly, co-abuse of tobacco is an invariable component in the use of crack cocaine (Budney *et al.*, 1993; Higgins *et al.*, 1994). Cocaine use differs from that of tobacco/nicotine, however, in that it tends to be episodic rather than continuous. An appropriate animal model for cocaine use therefore should involve repeated, acute exposure rather than continuous infusions (Siegel, 1982; Spear *et al.*, 1989a). Accordingly, we have used daily injections of cocaine to pregnant rats at a dose that simulates plasma levels found in crack cocaine users. This regimen causes CNS functional and behavioral alterations in the offspring (Dow-Edwards, 1989; Spear *et al.*, 1989a, b; Heyser *et al.*, 1992; Spear and Heyser, 1992; Goodwin *et al.*, 1993; Molina *et al.*, 1994).

Fetal cocaine exposure, like nicotine, elicits postnatal elevations in CNS ornithine decarboxylase activity, which is indicative of cell damage (Koegler *et al.*, 1991; Seidler and

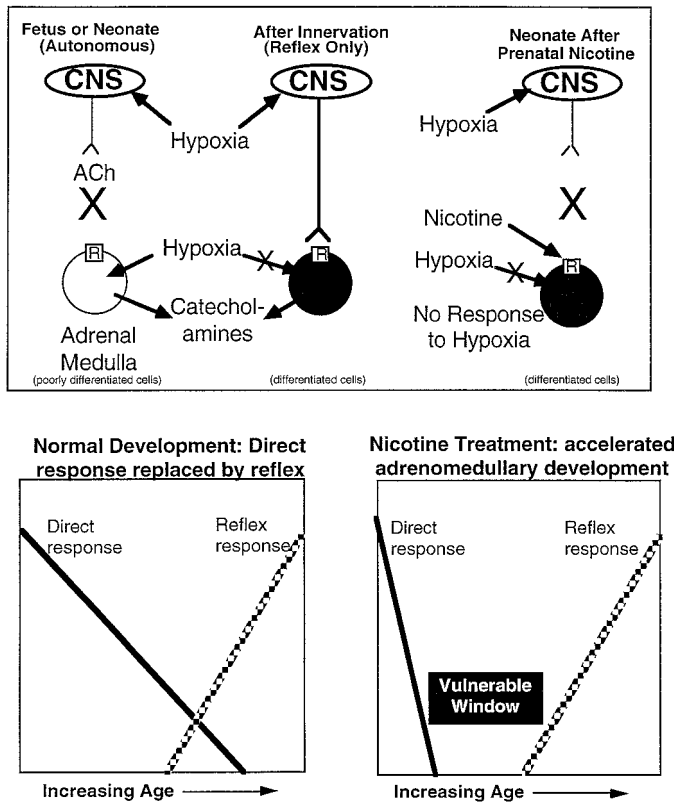


Fig. 12. Mechanisms underlying the adverse effects of prenatal nicotine on neonatal adrenomedullary function and their potential role in SIDS. In the fetus or neonate, the tissue responds autonomously to hypoxia so that catecholamines are released even though innervation is not functional. Ordinarily, the onset of innervation replaces the autonomous response with reflexly mediated release. With prenatal nicotine exposure, chronic, drug-induced depolarization of the chromaffin cells forces them into terminal differentiation prematurely so that autonomous responsiveness is lost *before* the onset of innervation, leading to an inability to respond to hypoxia. As shown at the bottom, normal rats are protected from the effects of hypoxia because they maintain adrenal catecholamine secretion at all times by autonomous or reflex mechanisms; the loss of autonomous response occurs only with the onset of reflex responses. In the nicotine group, the premature loss of the autonomous response opens a window of vulnerability in which neither process can contribute to catecholamine release. With further development, this window closes with the onset of functional innervation.

Slotkin, 1993; Slotkin *et al.*, 1993; Spraggins *et al.*, 1994) (fig. 13). However, the effects are smaller in magnitude than those of nicotine and do not persist into the second postnatal week. More strikingly, cocaine exposure does not lead to irrevocable cell loss, as shown by maintenance of normal

DNA content (Seidler and Slotkin, 1993). We were surprised therefore to find that a single injection of cocaine to neonatal rats does inhibit DNA synthesis acutely (Anderson-Brown *et al.*, 1990) (fig. 14). The effects differ from those of a single injection of nicotine in two regards. First, the effects of cocaine are not regionally selective, whereas the effect of nicotine follows the distribution of nicotinic cholinergic receptors. Second, the effects of cocaine are extremely short-lived, disappearing within 4 hr of administration, whereas the effect of nicotine persists.

These findings suggest a likely explanation for the greater impact of nicotine than cocaine on cellular development. Exposure to nicotine *via* continuous infusions depresses DNA synthesis for an extended period. Episodic cocaine exposure permits the DNA synthetic rate to recover in between injections, thus avoiding cell loss, although there is still evidence for cell damage (albeit less than for nicotine). The differing animal models used here are realistic because they mimic the patterns of tobacco and cocaine use. Smokers tend to maintain plasma nicotine levels at a constant value, a factor which also operates in transdermal nicotine patch administration. Cocaine is used in “jags” with extended periods of non-use. Given the much shorter plasma half-life of cocaine, there is a much greater opportunity for fetal CNS recovery from mitotic suppression.

These findings do not imply that cocaine is without effect on the developing brain, but rather that the effects are likely to be more subtle than those of nicotine. When “crack baby syndrome” first appeared in the scientific literature, the initial findings suggested extremely adverse effects (Chasnoff *et al.*, 1985, 1987, 1989). However, more carefully controlled human studies were unable to replicate the original findings and animal studies revealed only subtle behavioral differences; this led to a period in which the existence of an identifiable perinatal cocaine syndrome was called into question (Coles, 1993; Day and Richardson, 1993; Koren, 1993; Neuspel, 1993; Konkol, 1994; Snodgrass, 1994). With further study, the pendulum has swung back somewhat because it is now evident that cocaine does indeed alter synaptic and behavioral performance, but without the frank damage found with nicotine or smoking (Spear and Heyser, 1992; Zuckerman and Frank, 1992, 1994; Meyer *et al.*, 1996; Levitt *et al.*, 1997).

In keeping with the view that cocaine can alter neurobehavioral development, we have modeled some of the aspects of prenatal cocaine exposure on the development of synaptic activity and, with others, have found both transient and

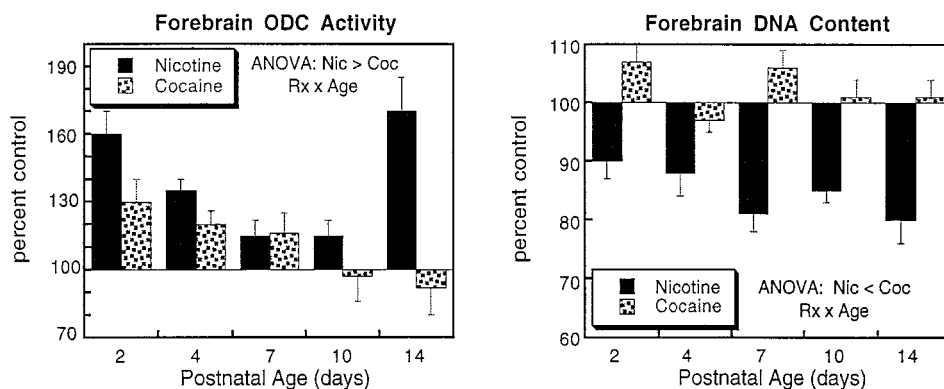


Fig. 13. Comparative effects of prenatal exposure to nicotine by infusion, or cocaine by injection (Slotkin *et al.*, 1987c; Seidler and Slotkin, 1993). Although both nicotine and cocaine elicit evidence of cell damage (elevated ornithine decarboxylase, ODC), the effect of nicotine is more persistent. Nicotine (Nic), but not cocaine (Coc), produces deficits in cell number, as evidenced by reduced DNA content. ANOVA, analysis of variance.

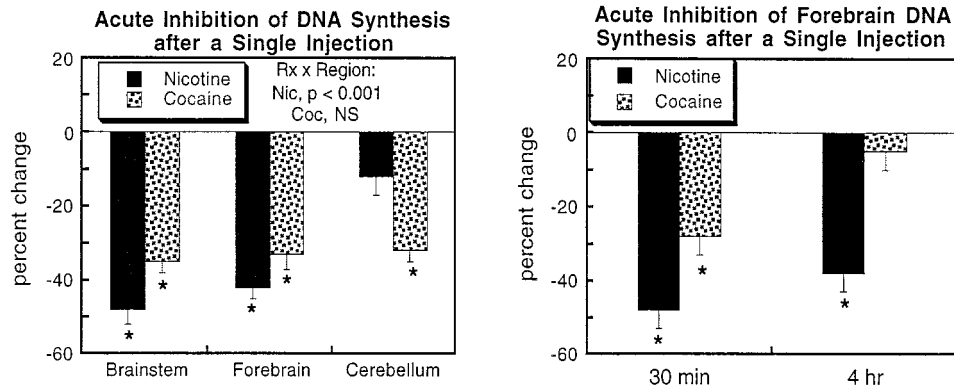


Fig. 14. Regional selectivity and persistence of effect of a single injection of nicotine (Nic) or cocaine (Coc) on DNA synthesis in neonatal rat brain (Anderson-Brown *et al.*, 1990; McFarland *et al.*, 1991). Both drugs inhibit DNA synthesis within the first 30 min after injection, but only the effect of nicotine is regionally selective, favoring regions that have high nicotinic receptor concentrations. Cocaine elicits uniform inhibition across all regions. The effect of nicotine persists for 4 hr after drug administration, whereas the effect of cocaine does not.

permanent alterations in presynaptic input and postsynaptic signal transduction (Nye *et al.*, 1991; Seidler *et al.*, 1992a, 1995; Seidler and Slotkin, 1992; Spear and Heyser, 1992; Miller *et al.*, 1995; Wang *et al.*, 1995; Choi and Ronnekleiv, 1996; Collins and Meyer, 1996; Friedman *et al.*, 1996; Keller *et al.*, 1996; Levitt *et al.*, 1997; McGrath *et al.*, 1997; Murphy *et al.*, 1997). However, in light of the fact that animal models of cocaine exposure involve repeated individual doses (similar to crack cocaine use), each of which elicits an hypoxic-ischemic episode, it is useful to compare some of the features of the effects of cocaine with those of hypoxia, or with maternally injected nicotine, which also evokes fetal hypoxia-ischemia. The same outcome is obtained with all three treatments; namely persistent noradrenergic hyperactivity, as evidenced by increased transmitter turnover (fig. 15). We have also found that blocking the acute hypoxic-ischemic reaction to cocaine can prevent some of the CNS developmental damage (Koegler *et al.*, 1991), and that interactions between cocaine and hypoxia that compromise cardiovascular function, and hence oxygen delivery to the brain, also contribute to the apparent CNS vulnerability to cocaine (Slotkin *et al.*, 1993; Spraggins *et al.*, 1994). The effects of fetal cocaine exposure on serotonergic systems can be duplicated by administering glucocorticoids (McGrath *et al.*, 1997), which are released during hypoxic episodes (Seidler and Slotkin, 1985). There is every reason to believe, then, that the repeated episodes of fetal hypoxia-ischemia accompanying crack cocaine use (Mactutus and Fechter, 1986) play a key role in the effects on brain development and function, and that to the extent that both cigarette smoking and cocaine elicit hypoxia the outcomes associated with “crack baby syndrome” represent a common underlying mechanism. As a corollary, the high rate of cigarette smoking in cocaine users may make it extremely difficult to define long-term adverse effects that are attributable to cocaine *per se*.

The basic difference, then, is that the effects of injected nicotine or cocaine resemble each other strongly, but diverge substantially from the effects of infused nicotine. Thus, pharmacokinetic differences in drug delivery play an extremely important role in fetal outcome. Maintaining a fixed plasma level of nicotine, as with minipump infusions or transdermal patches, produces effects that are characteristic of the developmental neurotoxicity of nicotine. Repeated injections of nicotine superimpose the effects of hypoxic damage, leading to potentially different outcomes that resemble those of cocaine. As discussed below, these differences point the way to appropriate and inappropriate use of nicotine substitutes in smoking cessation strategies.

Implications for Human Effects of Cigarette Smoking, Nicotine Replacement Therapy and Crack Cocaine Use

Our findings indicate conclusively that nicotine is a neuroteratogen, acting to cause cell damage and reduced cell number, to impair synaptic activity and to evoke these changes at thresholds below those necessary for growth impairment. The underlying mechanisms are receptor-mediated, accounting for the low thresholds and for the involvement of brain regions and transmitter systems that have prominent cholinergic inputs. Receptor stimulation leads to two distinct errors in the program of cell development, a premature change from cell replication to differentiation and, after a delay, initiation of the program for apoptosis. But of what use is this information regarding smoking in pregnancy? First, our results indicate that cigarette smoking is directly injurious to fetal development because of the delivery of nicotine itself; the documented adverse effects of maternal smoking are not simply a correlation of associated epiphenomena, but represent a true, cause-and-effect relationship. Second, the low threshold for effects of nicotine indicates that the use of intrauterine growth retardation as an index of damage is totally inappropriate. For the same reason, the “safe” level for nicotine exposure *via* maternal smoking is

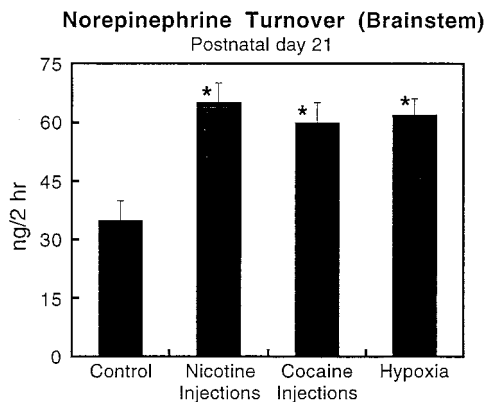


Fig. 15. Persistent effects of prenatal nicotine or cocaine exposure *via* maternal injections, or an episode of neonatal hypoxia (Slotkin *et al.*, 1987a; Seidler and Slotkin, 1990, 1992). All three treatments evoke a lasting elevation of norepinephrine turnover, which indicates synaptic hyperactivity. These results suggest that a common factor (hypoxia-ischemia) underlies some of the similarities between the effects of nicotine and cocaine on neurodevelopment.

probably lower than suspected heretofore. Third, we need to be more informed about how best to use nicotine for smoking cessation. Currently, nicotine substitutes are used freely, without regard to critical developmental periods or pharmacokinetic issues. It is therefore worthwhile to examine how our results can influence the use of nicotine replacement to minimize fetal effects.

The identification of nicotinic receptors as the specific target for the adverse effects of nicotine on the developing brain means that fetal susceptibility can be predicted by the ontogenetic emergence and increase of receptor sites. Contrary to current views of classical teratogenesis, the second and third trimesters should be more sensitive to adverse effects of nicotine than the first trimester, which is ordinarily considered to be the critical period for developmental disruptors. Indeed, the fact that receptors emerge after the major phase of systemic organogenesis is completed (Hagino and Lee, 1985; Larsson *et al.*, 1985; Lichtensteiger *et al.*, 1987; Slotkin *et al.*, 1987b; Cairns and Wonnacott, 1988) can provide an advantage. The first trimester is a window of opportunity in which to intervene to help a prospective mother discontinue smoking. Currently, however, the most common procedure is to counsel and cajole during the first trimester and only then to intervene pharmacologically. It obviously would be better to introduce nicotine replacement as early as possible and to try to reduce the exposure levels by the second to third trimester, rather than initiating and intensifying pharmacotherapy just at the point when receptors emerge.

The next issue raised by our findings is how to optimize nicotine delivery and pharmacokinetics in pregnancy. For many drugs, including nicotine and cocaine, the placenta provides significant fetal protection by metabolizing a portion of the drug and by introducing a phase delay between the maternal and fetal circulations (Goldstein *et al.*, 1974; Sastri, 1991). Thus, episodic drug delivery produces less penetration into the fetal compartment than does continuous exposure. In contrast, maintenance of a steady-state maternal plasma drug level enables the equilibration of all fluid compartments to the same final concentration, thus compromising the protective role of the placenta (Goldstein *et al.*, 1974). Indeed, in our hands, injections of even acutely toxic doses of nicotine to pregnant rats produce less fetal resorption than do otherwise less toxic infusion paradigms (Slotkin *et al.*, 1986b, 1987a, b; Navarro *et al.*, 1988; Slotkin, 1992). In a recent human study, nicotine transdermal patch use was associated with greater fetal cardiovascular effects than was cigarette smoking (Oncken *et al.*, 1997). How does this influence the potential use of nicotine replacement therapy during pregnancy? For smokers with unrestricted access to cigarettes there may be few adverse fetal consequences to substituting a transdermal patch for smoking because most tobacco users maintain their smoking to achieve a steady-state plasma level of nicotine. Replacement therapy would have the benefit of removing the additional injurious substances found in cigarette smoke. However, for smokers who spend their day in an environment where smoking is restricted nicotine intake may resemble an episodic exposure model, with relative protection of the fetus. In these smokers, especially if they smoke only small amounts, it is possible that greater fetal injury may result from the use of high-dose nicotine patches; accordingly, for this population, the total daily nicotine dose, whether delivered by smoking or by re-

placement therapy, should be considered carefully. In any case, some obvious rules can be applied, based solely on the recognition that nicotine injures the fetal brain through receptor-mediated mechanisms. Then, if patches are used they should be introduced early in pregnancy, with an attempt to discontinue use by the second trimester, assuming, of course, that compliance with smoking cessation will be maintained. Lower doses should be preferred and women should be encouraged to remove the patch overnight to permit plasma levels to decay from the steady-state. Perhaps most importantly, severe warnings should be given concerning smoking while the patch is applied, over and above the standard warnings given to nonpregnant patients; the combination of smoking and a high-dose nicotine patch can be expected to have significantly worse fetal consequences than either smoking or patch alone. It is uncertain, however, how these educational roles can be achieved when transdermal patch delivery systems for nicotine are available over the counter and thus without verbal instruction from physician or pharmacist. Finally, we can take even further advantage of pharmacokinetic differences in nicotine dosage forms because of the availability of nicotine inhalers and gum (Oncken *et al.*, 1996). Used as episodic delivery devices that elicit much lower plasma levels of nicotine, these are a better means of smoking cessation therapy during pregnancy, because they involve less fetal risk than with steady-state delivery systems.

Considering the comparative effects of fetal nicotine or cocaine exposure, a remaining issue is whether the reported adverse effects of maternal crack cocaine abuse represent actions of cocaine alone, cocaine combined with nicotine, or cocaine, nicotine and hypoxia all acting simultaneously. Although animal studies permit the individual contributing variables to be examined separately, the reality of crack cocaine use during pregnancy is that all three are superimposed in virtually all exposures (Budney *et al.*, 1993; Higgins *et al.*, 1994). Given the known consequences of maternal cigarette smoking for fetal outcome (DiFranza and Lew, 1995), it may prove difficult to identify in humans a specific, adverse consequence attributable solely to maternal cocaine abuse. From the public health perspective, cigarette smoking, and hence nicotine exposure, remains by far the larger problem and is much more likely to represent an issue where increased public awareness and education can have an impact. It is difficult to envision how comparable efforts can be undertaken successfully for prevention of cocaine abuse in pregnancy. Thus, the definitive proof that tobacco contains a substance that directly injures the fetal brain should help redirect our efforts at preventive measures and interventions that can reduce or avoid the public health consequences of maternal smoking.

Whereas epidemiological studies often provide the initial observations of adverse perinatal consequences of drug exposures, animal models can establish, once and for all, that these agents damage the developing brain. Relating the neurobehavioral disturbances found in animal studies to changes in human behavioral performance is far more difficult. Numerous factors, both genetic and environmental, contribute to intelligence, learning, cognitive performance, or other behaviors that may be the ultimate cost of maternal smoking or cocaine use. Consequently, regression toward the mean magnifies the difficulty of demonstrating a difference

in average performance scores in the human population, even when such effects might be robust in animal studies. Another way of stating this is that fetal exposure to drugs like nicotine evokes adverse changes whose consequences in human populations may be obscured by other variables. Nevertheless, it is feasible, at least in theory, to demonstrate such changes by concentrating on characteristics that appear only rarely in the normal population. At the physiological level, high rates of SIDS are therefore demonstrable as a definitive consequence of maternal smoking (Haglund and Cnattingius, 1990; DiFranza and Lew, 1995; Poets *et al.*, 1995). At the behavioral level, learning disabilities, disruptive behavior and attention deficit and hyperactivity disorder are all much more common in the offspring of women who smoke (Eskenzi and Trupin, 1995); there are no studies available yet that demonstrate comparable effects of crack cocaine use, nor is it likely that such studies can separate any effects of cocaine from the overriding consequence of concurrent tobacco use. However, the success of finding increased odds of these behavioral abnormalities suggests that similar approaches can be taken to characterize nicotine-induced fetal damage as they affect intelligence or cognition. As a purely theoretical experiment, we can imagine a situation in which the entire U.S. population is exposed to a subtle neuroteratogen, such that the average IQ is reduced by five points (fig. 16), a change that would be virtually undetectable in any reasonably sized experimental cohort. Indeed, the proportion of people exhibiting "normal" IQ values between -3 and $+3$ standard deviations (IQ of 55 to 145), would be virtually unchanged. In contrast, the proportion of individuals with severe retardation would triple and that of extremely gifted people would fall by two-thirds, effects that should be readily measurable. Given the smoking rate of 25% in pregnant women in the United States, these more subtle consequences of neurobehavioral teratogenesis by nicotine may thus have very real consequences within the population at large.

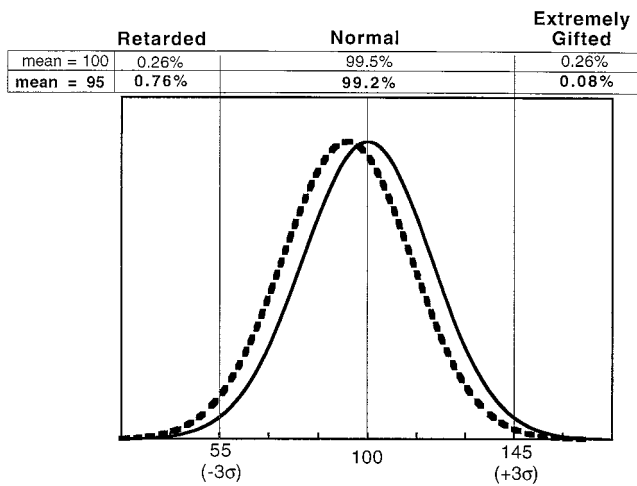


Fig. 16. An imaginary experiment in which a population is exposed to an agent that reduces the IQ by 5 points. If assessments are limited to people falling within the "normal" range (55–145), there is virtually no change in outcome. If, however, assessments are made in the tails of the distribution, focusing on rarely occurring values, the small change in average IQ produces disproportionately large changes, with a 3-fold increase in retardation and a loss of two-thirds of the extremely gifted group. Neurobehavioral teratogenesis by drugs of abuse or environmental factors might be studied better in human populations by concentrating on these small subpopulations, rather than by focusing on changes in average scores.

Nicotine exposure is likely to be the single most widespread prenatal chemical insult in the world, continuing unabated despite decades of educational and medical intervention. It is likely to become of even greater significance with the increasing use of tobacco in Third World countries that have typically high pregnancy rates, with the disappearance of societal prohibitions on women's smoking and with the covert encouragement of smoking by corporations or even governments that have a financial stake in the continued use of tobacco (World Health Organization, 1997). The attendant increase in smoking by women of childbearing age and the consequent rise in the incidence of fetal brain damage will continue to play a pivotal and tragic role in our society.

References

- Anderson-Brown T, Slotkin TA and Seidler FJ (1990) Cocaine acutely inhibits DNA synthesis in developing rat brain regions: Evidence for direct actions. *Brain Res* **537**:197–202.
- Bardy AH, Seppala T, Lillsunde P, Kataja JM, Koskela P, Pikkarainen J and Hillesmaa VK (1993) Objectively measured tobacco exposure during pregnancy: neonatal effects and relation to maternal smoking. *Br J Obstet Gynaecol* **100**:721–726.
- Bareis DL and Slotkin TA (1978) Responses of heart ornithine decarboxylase and adrenal catecholamines to methadone and sympathetic stimulants in developing and adult rats. *J Pharmacol Exp Ther* **205**:164–174.
- Barnes CD and Eltherington LG (1973) *Drug Dosage in Laboratory Animals: A Handbook* (Revised Edition), University of California Press, Berkeley, CA.
- Bell GL and Lau K (1995) Perinatal and neonatal issues of substance abuse. *Pediatr Clin North Am* **42**:261–281.
- Bell JM and Lundberg PK (1985) Effects of a commercial soy lecithin preparation on development of sensorimotor behavior and brain biochemistry in the rat. *Dev Psychobiol* **18**:59–66.
- Bell JM and Slotkin TA (1985) Perinatal dietary supplementation with a commercial soy lecithin preparation: effects on behavior and brain biochemistry in the developing rat. *Dev Psychobiol* **18**:383–394.
- Bell JM, Whitmore WL, Barnes G, Seidler FJ and Slotkin TA (1986a) Perinatal dietary exposure to soy lecithin: altered sensitivity to central cholinergic stimulation. *Int J Dev Neurosci* **4**:497–501.
- Bell JM, Whitmore WL, Cowdery T and Slotkin TA (1986b) Perinatal dietary supplementation with a soy lecithin preparation: effects on development of central catecholaminergic neurotransmitter systems. *Brain Res Bull* **17**:189–195.
- Bell JM, Whitmore WL, Queen KL, Orband-Miller L and Slotkin TA (1987) Biochemical determinants of growth sparing during neonatal nutritional deprivation or enhancement: ornithine decarboxylase, polyamines, and macromolecules in brain regions and heart. *Pediatr Res* **22**:599–604.
- Bian X, Briggs MM, Schachat FH, Seidler FJ and Slotkin TA (1992) Glucocorticoids accelerate the ontogenetic transition of cardiac ventricular myosin heavy-chain isoform expression in the rat: promotion by prenatal exposure to a low dose of dexamethasone. *J Dev Physiol* **18**:35–42.
- Black IB (1980) Developmental regulation of neurotransmitter phenotype. *Curr Topics Dev Biol* **15**:27–40.
- Black IB, Bloom EM and Hamill RW (1976) Central regulation of sympathetic neuron development. *Proc Natl Acad Sci USA* **73**:3575–3578.
- Black IB and Geen SC (1973) Trans-synaptic regulation of adrenergic neuron development: inhibition by ganglionic blockade. *Brain Res* **63**:291–302.
- Black IB and Mytilineou C (1976) Trans-synaptic regulation of the development of end organ innervation by sympathetic neurons. *Brain Res* **101**:503–521.
- Budney AJ, Higgins ST, Hughes JR and Bickel WK (1993) Nicotine and caffeine use in cocaine-dependent individuals. *J Subst Abuse Treat* **5**:117–130.
- Burke MS and Roth D (1993) Anonymous cocaine screening in a private obstetric population. *Obstet Gynecol* **81**:354–356.
- Butler NR and Goldstein H (1973) Smoking in pregnancy and subsequent child development. *Br Med J* **4**:573–574.
- Buznikov GA, Chudakova IV and Zvedina ND (1964) The role of neurohumors in early embryogenesis. I. Serotonin content of developing embryos of sea urchin and loach. *J Embryol Exp Morphol* **12**:563–573.
- Buznikov GA, Kost AN and Berdysheva LV (1970) The role of neurohumors in early embryogenesis. 3. Pharmacological analysis of the role of neurohumors in cleavage divisions. *J Embryol Exp Morphol* **23**:549–569.
- Cairns NJ and Wonnacott S (1988) [³H](-)-nicotine binding sites in fetal human brain. *Brain Res* **475**:1–7.
- Carlos RQ, Seidler FJ, Lappi SE and Slotkin TA (1991) Fetal dexamethasone exposure affects basal ornithine decarboxylase activity in developing rat brain regions and alters acute responses to hypoxia and maternal separation. *Biol Neonate* **59**:69–77.
- Chasnoff IJ, Burns KA and Burns WJ (1987) Cocaine use in pregnancy: perinatal morbidity and mortality. *Neurotoxicol Teratol* **9**:291–293.
- Chasnoff IJ, Burns WJ, Schnoll SH and Burns KA (1985) Cocaine use in pregnancy. *N Engl J Med* **313**:666–669.
- Chasnoff IJ, Lewis DE, Griffith DR and Willey S (1989) Cocaine and pregnancy: clinical and toxicological implications for the neonate. *Clin Chem* **35**:1276–1278.
- Choi WS and Ronnekleiv OK (1996) Effects of *in utero* cocaine exposure on the expression of mRNAs encoding the dopamine transporter and the D1, D2 and D5 dopamine receptor subtypes in fetal rhesus monkey. *Dev Brain Res* **96**:249–260.

- Claycomb WC (1976) Biochemical aspects of cardiac muscle differentiation. *J Biol Chem* **251**:6082–6089.
- Cnattingius S and Nordstrom ML (1996) Maternal smoking and feto-infant mortality: biological pathways and public health significance. *Acta Paediatr* **85**:1400–1402.
- Cochard P, Goldstein M and Black IB (1979) Initial development of the noradrenergic phenotype in autonomic neuroblasts of the rat embryo *in vivo*. *Dev Biol* **71**:100–114.
- Coles CD (1993) Saying goodbye to the crack baby. *Neurotoxicol Teratol* **15**:290–292.
- Collins LM and Meyer JS (1996) Prenatal cocaine alters dopamine transporter binding in postnatal day 10 rat striatum. *Synapse* **23**:335–343.
- Cooper JR, Bloom FE and Roth RH (1986) *The Biochemical Basis of Neuropharmacology*, 5th ed, Oxford University Press, New York.
- Curran T and Morgan JJ (1995) Fos: An immediate-early transcription factor in neurons. *J Neurobiol* **26**:403–412.
- Cutler AR, Wilkerson AE, Gingras JL and Levin ED (1996) Prenatal cocaine and/or nicotine exposure in rats: Preliminary findings on long-term cognitive outcome and genital development at birth. *Neurotoxicol Teratol* **18**:635–643.
- Day NL and Richardson GA (1993) Cocaine use and crack babies: science, the media, and miscommunication. *Neurotoxicol Teratol* **15**:293–294.
- de Grauw TJ, Myers RE and Scott WJ (1986) Fetal growth retardation in rats from different levels of hypoxia. *Biol Neonate* **49**:85–89.
- DiFranza JR and Lew RA (1995) Effect of maternal cigarette smoking on pregnancy complications and Sudden Infant Death Syndrome. *J Fam Pract* **40**:385–394.
- Dodge PR, Prensley AL and Feigin RD (1975) *Nutrition and the Developing Nervous System*, C. V. Mosby, St. Louis, MO.
- Dow-Edwards DL (1989) Long-term neurochemical and neurobehavioral consequences of cocaine use during pregnancy. *Ann N Y Acad Sci* **562**:280–289.
- Drugge ED, Rosen MR and Robinson RB (1985) Neuronal regulation of the development of the α -adrenergic cholinergic response in the rat heart. *Circ Res* **57**:415–423.
- Duncan CP, Seidler FJ, Lappi SE and Slotkin TA (1990) Dual control of DNA synthesis by α - and β -adrenergic mechanisms in normoxic and hypoxic neonatal rat brain. *Dev Brain Res* **55**:29–33.
- Dunn HG and McBurney AK (1977) Cigarette smoking and the fetus and child. *Pediatrics* **60**:772.
- Eskenazi B and Trupin LS (1995) Passive and active maternal smoking during pregnancy, as measured by serum cotinine, and postnatal smoke exposure. 2. Effect on neurodevelopment at age 5 years. *Am J Epidemiol* **142**:S19–S29.
- Friedman E, Yadin E and Wang HY (1996) Effect of prenatal cocaine on dopamine receptor-G protein coupling in mesocortical regions of the rabbit brain. *Neuroscience* **70**:739–747.
- Ginzel KH (1985) The underemphasis on smoking in medical education. *N Y State J Med* **85**:299–301.
- Goldstein A, Aronow L and Kalman SM (1974) *Principles of Drug Action: The Basis of Pharmacology*, 2nd ed, John Wiley & Sons, New York.
- Goodwin GA, Moody CA and Spear LP (1993) Prenatal cocaine exposure increases the behavioral sensitivity of neonatal rat pups to ligands active at opiate receptors. *Neurotoxicol Teratol* **15**:425–431.
- Guerri C and Renau-Piqueras J (1997) Alcohol, astroglia, and brain development. *Mol Neurobiol* **15**:65–81.
- Hagino N and Lee JW (1985) Effect of maternal nicotine on the development of sites for [³H]nicotine binding in the fetal brain. *Int J Dev Neurosci* **3**:567–571.
- Haglund B and Cnattingius S (1990) Cigarette smoking as a risk factor for sudden infant death syndrome: a population-based study. *Am J Public Health* **80**:29–32.
- Heyser CJ, Spear NE and Spear LP (1992) Effects of prenatal exposure to cocaine on conditional discrimination learning in adult rats. *Behav Neurosci* **106**:837–845.
- Higgins ST, Budney AJ, Hughes JR, Bickel WK, Lynn M and Mortensen A (1994) Influence of cocaine use on cigarette smoking. *J Am Med Assoc* **272**:1724.
- Hohmann CF, Brooks AR and Coyle JT (1988) Neonatal lesions of the basal forebrain cholinergic neurons result in abnormal cortical development. *Dev Brain Res* **42**:253–264.
- Hou Q-C, Eylers JP, Lappi SE, Kavlock RJ and Slotkin TA (1989a) Neonatal sympathectomy compromises development of responses of ornithine decarboxylase to hormonal stimulation in peripheral tissues. *J Dev Physiol* **12**:189–192.
- Hou Q-C, Seidler FJ and Slotkin TA (1989b) Development of the linkage of β -adrenergic receptors to cardiac hypertrophy and heart rate control: Neonatal sympathectomy with 6-hydroxydopamine. *J Dev Physiol* **11**:305–311.
- Hunt CE and Brouillette RT (1987) Sudden Infant Death Syndrome: 1987 perspective. *J Pediatr* **110**:669–678.
- Jonsson G and Hallman H (1980) Effects of neonatal nicotine administration on the postnatal development of central noradrenaline neurons. *Acta Physiol Scand Suppl* **479**:25–26.
- Kandall SR and Gaines J (1991) Maternal substance abuse and subsequent sudden infant death syndrome (SIDS) in offspring. *Neurotoxicol Teratol* **13**:235–240.
- Kauffman KS, Seidler FJ and Slotkin TA (1994) Prenatal dexamethasone exposure causes loss of neonatal hypoxia tolerance: Cellular mechanisms. *Pediatr Res* **35**:515–522.
- Keller RW, Johnson KS, Snyder-Keller AM, Carlson JN and Glick SD (1996) Effects of prenatal cocaine exposure on the mesocorticolimbic dopamine system: an *in vivo* microdialysis study in the rat. *Brain Res* **742**:71–79.
- Klemm N and Kuhar MJ (1979) Post-mortem changes in high affinity choline uptake. *J Neurochem* **32**:1487–1494.
- Koegler SM, Seidler FJ, Spencer JR and Slotkin TA (1991) Ischemia contributes to adverse effects of cocaine on brain development: suppression of ornithine decarboxylase activity in neonatal rat. *Brain Res Bull* **27**:829–834.
- Konkol RJ (1994) Is there a cocaine baby syndrome? *J Child Neurol* **9**:225–226.
- Koren G (1993) Cocaine and the human fetus: the concept of teratophilia. *Neurotoxicol Teratol* **15**:301–304.
- Koren G, Gladstone D, Robeson C and Robieux I (1992) The perception of teratogenic risk of cocaine. *Teratology* **46**:567–571.
- Lagercrantz H and Slotkin TA (1986) The “stress” of being born. *Sci Am* **254**(April):100–107.
- Larsson C, Nordberg A, Falkeborn Y and Lundberg R-Å. (1985) Regional [³H]acetylcholine and [³H]nicotine binding in developing mouse brain. *Int J Dev Neurosci* **3**:667–671.
- Lauder JM (1985) Roles for neurotransmitters in development: possible interaction with drugs during the fetal and neonatal periods, in *Prevention of Physical and Mental Congenital Defects* (Marois M, ed) pp 375–380, Alan R. Liss, New York.
- Lawrence JM, Hamill RW, Cochard P, Raisman G and Black IB (1981) Effects of spinal cord transection on synapse numbers and biochemical maturation in rat lumbar sympathetic ganglia. *Brain Res* **212**:83–88.
- Levin ED, Briggs SJ, Christopher NC and Rose JE (1993) Prenatal nicotine exposure and cognitive performance in rats. *Neurotoxicol Teratol* **15**:251–260.
- Levin ED, Wilkerson A, Jones JP, Christopher NC and Briggs SJ (1996) Prenatal nicotine effects on memory in rats: pharmacological and behavioral challenges. *Dev Brain Res* **97**:207–215.
- Levitt P, Harvey JA, Friedman E, Simansky K and Murphy EH (1997) New evidence for neurotransmitter influences on brain development. *Trends Neurosci* **20**:269–274.
- Lichtensteiger W, Ribary U, Schlumpf M, Odermatt B and Widmer HR (1988) Prenatal adverse effects of nicotine on the developing brain. *Prog Brain Res* **73**:137–157.
- Lichtensteiger W and Schlumpf M (1985) Prenatal nicotine affects fetal testosterone and sexual dimorphism of saccharin preference. *Pharmacol Biochem Behav* **23**:439–444.
- Lichtensteiger W, Schlumpf M and Ribary U (1987) Modifications pharmacologiques de l'ontogenèse neuroendocrine. *Ann Endocrinol* **48**:393–399.
- Lin W, Seidler FJ, McCook EC and Slotkin TA (1992) Overexpression of α_2 -adrenergic receptors in fetal rat heart: receptors in search of a function. *J Dev Physiol* **17**:183–187.
- Mactutus CF and Fechter LD (1986) Perinatal hypoxia: implications for mammalian development, in *Handbook of Behavioral Teratology* (Riley EA and Vorhees CV, eds) pp 427–470, Plenum, New York.
- Mahalik MP, Gautieri RF and Mann Jr DE (1984) Mechanisms of cocaine-induced teratogenesis. *Res Commun Subst Abuse* **5**:279–302.
- Martin JC and Becker RF (1970) The effects of nicotine administration *in utero* upon activity in the rat. *Psychon Sci* **19**:59–60.
- Martin JC and Becker RF (1971) The effects of maternal nicotine absorption or hypoxic episodes upon appetitive behavior of rat offspring. *Dev Psychobiol* **4**:133–147.
- McFarland BJ, Seidler FJ and Slotkin TA (1991) Inhibition of DNA synthesis in neonatal rat brain regions caused by acute nicotine administration. *Dev Brain Res* **58**:223–229.
- McGrath KE, Seidler FJ and Slotkin TA (1997) Convergent control of serotonin transporter expression by glucocorticoids and cocaine in fetal and neonatal rat brain. *Dev Brain Res* **104**:209–213.
- Meyer JS, Shearman LP and Collins LM (1996) Monoamine transporters and the neurobehavioral teratology of cocaine. *Pharmacol Biochem Behav* **55**:585–593.
- Miao GG and Curran T (1994) Cell transformation by *c-fos* requires an extended period of expression and is independent of the cell cycle. *Mol Cell Biol* **14**:4295–4310.
- Milerad J and Sundell H (1993) Nicotine exposure and the risk of SIDS. *Acta Paediatr Suppl* **389**:70–72.
- Miller MW, Waziri R, Baruah S and Gilliam DM (1995) Long-term consequences of prenatal cocaine exposure on biogenic amines in the brains of mice: The role of sex. *Dev Brain Res* **87**:22–28.
- Mojet MH, Mills E and Duchon MR (1997) Hypoxia-induced catecholamine secretion in isolated newborn rat adrenal chromaffin cells is mimicked by inhibition of mitochondrial respiration. *J Physiol* **504**:175–189.
- Molina VA, Wagner JM and Spear LP (1994) The behavioral response to stress is altered in adult rats exposed prenatally to cocaine. *Physiol Behav* **55**:941–945.
- Murphy EH, Fischer I, Friedman E, Grayson D, Jones L, Levitt P, O'Brien-Jenkins A, Wang HY and Wang XH (1997) Cocaine administration in pregnant rabbits alters cortical structure and function in their progeny in the absence of maternal seizures. *Exp Brain Res* **114**:433–441.
- Murrin LC (1980) High-affinity transport of choline in neuronal tissue. *Pharmacology* **21**:132–140.
- Murrin LC, Ferrer JR, Wanyun Z and Haley NJ (1987) Nicotine administration to rats: methodological considerations. *Life Sci* **40**:1699–1708.
- Naeye RL (1978) Effects of maternal cigarette smoking on the fetus and placenta. *Br J Obstet Gynaecol* **85**:732–737.
- Naeye RL (1992) Cognitive and behavioral abnormalities in children whose mothers smoked cigarettes during pregnancy. *J Dev Behav Pediatr* **13**:425–8.
- Naeye RL and Peters EC (1984) Mental development of children whose mothers smoked during pregnancy. *Obstet Gynecol* **64**:601–7.
- Nasrat HA, Al-Hachim GM and Mahmood FA (1986) Perinatal effects of nicotine. *Biol Neonate* **49**:8–14.
- Navarro HA, Mills E, Seidler FJ, Baker FE, Lappi SE, Tayyeb MI, Spencer JR and Slotkin TA (1990a) Prenatal nicotine exposure impairs β -adrenergic function: persistent cholinergic subsensitivity despite recovery from deficits in receptor binding. *Brain Res Bull* **25**:233–237.
- Navarro HA, Seidler FJ, Eylers JP, Baker FE, Dobbins SS, Lappi SE and Slotkin TA (1989a) Effects of prenatal nicotine exposure on development of central and peripheral cholinergic neurotransmitter systems. Evidence for cholinergic trophic influences in developing brain. *J Pharmacol Exp Ther* **251**:894–900.
- Navarro HA, Seidler FJ, Schwartz RD, Baker FE, Dobbins SS and Slotkin TA (1989b) Prenatal exposure to nicotine impairs nervous system development at a dose which does not affect viability or growth. *Brain Res Bull* **23**:187–192.

- Navarro HA, Seidler FJ, Whitmore WL and Slotkin TA (1988) Prenatal exposure to nicotine via maternal infusions: effects on development of catecholamine systems. *J Pharmacol Exp Ther* **244**:940–944.
- Navarro HA, Slotkin TA, Tayyeb MI, Lappi SE and Seidler FJ (1990b) Effects of fetal nicotine exposure on development of adrenergic receptor binding in rat brain regions: selective changes in α_1 -receptors. *Res Commun Subst Abuse* **11**:95–103.
- Neuspiel DR (1993) Cocaine and the fetus: mythology of severe risk. *Neurotoxicol Teratol* **15**:305–306.
- Nijland R, Jongasma HW, Nijhuis JG, Vandenberg PP and Oeseburg B (1995) Arterial oxygen saturation in relation to metabolic acidosis in fetal lambs. *Am J Obstet Gynecol* **172**:810–819.
- Norton WT, Aquino DA, Hozumi I, Chin FC and Brosnan CF (1992) Quantitative aspects of reactive gliosis: A review. *Neurochem Res* **17**:877–885.
- Nye HE, Seidler FJ and Slotkin TA (1991) Developmental shift from local to central control of norepinephrine release in the cardiac-sympathetic axis: effects of cocaine and related drugs. *J Pharmacol Exp Ther* **259**:976–981.
- O'Callaghan JP (1993) Quantitative features of reactive gliosis following toxicant-induced damage of the CNS. *Ann N Y Acad Sci* **679**:195–210.
- Oncken CA, Hardardottir H, Hatsukami DK, Lupo VR, Rodis JF and Smeltzer JS (1997) Effects of transdermal nicotine or smoking on nicotine concentrations and maternal-fetal hemodynamics. *Obstet Gynecol* **90**:569–574.
- Oncken CA, Hatsukami DK, Lupo VR, Lando HA, Gibeau LM and Hansen RJ (1996) Effects of short-term use of nicotine gum in pregnant smokers. *Clin Pharmacol Ther* **59**:654–661.
- Poets CF, Schlaud M, Kleemann WJ, Rudolph A, Diekmann U and Sens B (1995) Sudden infant death and maternal cigarette smoking: results from the Lower Saxony Perinatal Working Group. *Eur J Pediatr* **154**:326–329.
- Poets CF, Stebbens VA, Samuels MP and Southall DP (1993) The relationship between bradycardia, apnea, and hypoxemia in preterm infants. *Pediatr Res* **34**:144–147.
- Preston GA, Lyon TT, Yin YX, Lang JE, Solomon G, Annab L, Srinivasan DG, Alcorta DA and Barrett JC (1996) Induction of apoptosis by c-Fos protein. *Mol Cell Biol* **16**:211–218.
- Renick S, Seidler FJ, McCook EC and Slotkin TA (1997) Neuronal control of cardiac and hepatic macromolecule synthesis in the neonatal rat: Effects of sympathectomy. *Pediatr Res* **41**:359–363.
- Ribary U and Lichtensteiger W (1989) Effects of acute and chronic prenatal nicotine treatment on central catecholamine systems of male and female rat fetuses and offspring. *J Pharmacol Exp Ther* **248**:786–792.
- Rosenthal RN and Slotkin TA (1977) Development of nicotinic responses in the rat adrenal medulla and long-term effects of neonatal nicotine administration. *Br J Pharmacol* **60**:59–64.
- Sastry BVR (1991) Placental toxicology: tobacco smoke, abused drugs, multiple chemical interactions, and placental function. *Reprod Fertil Dev* **3**:355–372.
- Schachat F, Seidler FJ and Slotkin TA (1995) The developmental switch in ventricular myosin expression *in vivo* is not triggered by an increase in cyclic AMP. *Reprod Fertil Dev* **7**:1361–1367.
- Seidler FJ, Lappi SE and Slotkin TA (1992a) Effects of prenatal cocaine exposure on development of rat cardiac adrenergic receptors and their control of adenylate cyclase activity. *Res Comm Substance Abuse* **13**:237–246.
- Seidler FJ, Levin ED, Lappi SE and Slotkin TA (1992b) Fetal nicotine exposure ablates the ability of postnatal nicotine challenge to release norepinephrine from rat brain regions. *Dev Brain Res* **69**:288–291.
- Seidler FJ and Slotkin TA (1985) Adrenomedullary function in the neonatal rat: responses to acute hypoxia. *J Physiol* **358**:1–16.
- Seidler FJ and Slotkin TA (1986a) Non-neurogenic adrenal catecholamine release in the neonatal rat: exocytosis or diffusion? *Dev Brain Res* **28**:274–277.
- Seidler FJ and Slotkin TA (1986b) Ontogeny of adrenomedullary responses to hypoxia and hypoglycemia: role of splanchnic innervation. *Brain Res Bull* **16**:11–14.
- Seidler FJ and Slotkin TA (1990) Effects of acute hypoxia on neonatal rat brain: Regionally selective, long-term alterations in catecholamine levels and turnover. *Brain Res Bull* **24**:157–161.
- Seidler FJ and Slotkin TA (1992) Fetal cocaine exposure causes persistent noradrenergic hyperactivity in rat brain regions: Effects on neurotransmitter turnover and receptors. *J Pharmacol Exp Ther* **263**:413–421.
- Seidler FJ and Slotkin TA (1993) Prenatal cocaine and cell development in rat brain regions: effects on ornithine decarboxylase and macromolecules. *Brain Res Bull* **30**:91–99.
- Seidler FJ, Temple SW, McCook EC and Slotkin TA (1995) Cocaine inhibits central noradrenergic and dopaminergic activity during the critical developmental period in which catecholamines influence cell development. *Dev Brain Res* **85**:48–53.
- Shelton DL, Nadler JV and Cotman CW (1979) Development of high affinity choline uptake and associated acetylcholine synthesis in the rat fascia dentata. *Brain Res* **163**:263–275.
- Siegel RK (1982) Cocaine smoking. *J Psychoactive Drugs* **14**:271–359.
- Simon JR, Atweh S and Kuhar MJ (1976) Sodium-dependent high affinity choline uptake: a regulatory step in the synthesis of acetylcholine. *J Neurochem* **26**:909–922.
- Slotkin TA (1986) Endocrine control of synaptic development in the sympathetic nervous system: the cardiac-sympathetic axis, in *Developmental Neurobiology of the Autonomic Nervous System* (Gootman PM, ed) pp 97–133, Humana Press, Clifton, NJ.
- Slotkin TA (1992) Prenatal exposure to nicotine: What can we learn from animal models? in *Maternal Substance Abuse and the Developing Nervous System* (Zagon IS and Slotkin TA, eds) pp 97–124, Academic Press, San Diego.
- Slotkin TA, Cho H and Whitmore WL (1987a) Effects of prenatal nicotine exposure on neuronal development: selective actions on central and peripheral catecholaminergic pathways. *Brain Res Bull* **18**:601–611.
- Slotkin TA, Cowdery TS, Orband L, Pachman S and Whitmore WL (1986a) Effects of neonatal hypoxia on brain development in the rat: immediate and long-term biochemical alterations in discrete regions. *Brain Res* **374**:63–74.
- Slotkin TA, Greer N, Faust J, Cho H and Seidler FJ (1986b) Effects of maternal nicotine injections on brain development in the rat: Ornithine decarboxylase activity, nucleic acids and proteins in discrete brain regions. *Brain Res Bull* **17**:41–50.
- Slotkin TA, Johnson DJ and Seidler FJ (1993) Acute effects of cocaine on ornithine decarboxylase activity in fetal and neonatal rat heart: evidence for cardiotoxicity. *Biol Neonate* **63**:290–296.
- Slotkin TA, Lappi SE, McCook EC, Lorber BA and Seidler FJ (1995) Loss of neonatal hypoxia tolerance after prenatal nicotine exposure: Implications for Sudden Infant Death Syndrome. *Brain Res Bull* **38**:69–75.
- Slotkin TA, Lappi SE, Tayyeb MI and Seidler FJ (1991) Chronic prenatal nicotine exposure sensitizes rat brain to acute postnatal nicotine challenge as assessed with ornithine decarboxylase. *Life Sci* **49**:665–670.
- Slotkin TA, Lau C, Kavlock RJ, Whitmore WL, Queen KL, Orband-Miller L, Bartolome M, Baker FE, Cameron AM, Antolick L and Bartolome JV (1988a) Trophic control of lung development by sympathetic neurons: effects of neonatal sympathectomy with 6-hydroxydopamine. *J Dev Physiol* **10**:577–590.
- Slotkin TA, Levant B, Orband-Miller L, Queen KL and Stasheff S (1988b) Do sympathetic neurons coordinate cellular development in the heart and kidney? Effects of neonatal central and peripheral catecholaminergic lesions on cardiac and renal nucleic acids and proteins. *J Pharmacol Exp Ther* **244**:166–172.
- Slotkin TA, McCook EC, Lappi SE and Seidler FJ (1992) Altered development of basal and forskolin-stimulated adenylate cyclase activity in brain regions of rats exposed to nicotine prenatally. *Dev Brain Res* **68**:233–239.
- Slotkin TA, McCook EC and Seidler FJ (1997a) Cryptic brain cell injury caused by fetal nicotine exposure is associated with persistent elevations of *c-fos* protooncogene expression. *Brain Res* **750**:180–188.
- Slotkin TA, Navarro HA, McCook EC and Seidler FJ (1990a) Fetal nicotine exposure produces postnatal up-regulation of adenylate cyclase activity in peripheral tissues. *Life Sci* **47**:1561–1567.
- Slotkin TA, Orband-Miller L and Queen KL (1987b) Development of [3 H]nicotine binding sites in brain regions of rats exposed to nicotine prenatally via maternal injections or infusions. *J Pharmacol Exp Ther* **242**:232–237.
- Slotkin TA, Orband-Miller L, Queen KL, Whitmore WL and Seidler FJ (1987c) Effects of prenatal nicotine exposure on biochemical development of rat brain regions: maternal drug infusions via osmotic minipumps. *J Pharmacol Exp Ther* **240**:602–611.
- Slotkin TA, Saleh JL, McCook EC and Seidler FJ (1997b) Impaired cardiac function during postnatal hypoxia in rats exposed to nicotine prenatally: implications for perinatal morbidity and mortality, and for Sudden Infant Death Syndrome. *Teratology* **55**:177–184.
- Slotkin TA, Seidler FJ, Crain BJ, Bell JM, Bisette G and Nemeroff CB (1990b) Regulatory changes in presynaptic cholinergic function assessed in rapid autopsy material from patients with Alzheimer disease: Implications for etiology and therapy. *Proc Natl Acad Sci USA* **87**:2452–2455.
- Slotkin TA, Whitmore WL, Orband-Miller L, Queen KL and Haim K (1987d) Beta adrenergic control of macromolecule synthesis in neonatal rat heart, kidney and lung: relationship to sympathetic neuronal development. *J Pharmacol Exp Ther* **243**:101–109.
- Slotkin TA, Windh R, Whitmore WL and Seidler FJ (1988c) Adrenergic control of DNA synthesis in developing rat brain regions: effects of intracisternal administration of isoproterenol. *Brain Res Bull* **21**:737–740.
- Smeyne RJ, Vendrell M, Hayward M, Baker SJ, Miao GG, Schilling K, Robertson LM, Curran T and Morgan JI (1993) Continuous *c-fos* expression precedes programmed cell death *in vivo*. *Nature* **363**:166–169.
- Snodgrass SR (1994) Cocaine babies: a result of multiple teratogenic influences. *J Child Neurol* **9**:227–233.
- Southall DP, Noyes JP, Poets CF and Samuels MP (1993) Mechanisms for hypoxaemic episodes in infancy and early childhood. *Acta Paediatr Suppl* **389**:60–62.
- Spear LP, Frambes NA and Kirstein CL (1989a) Fetal and maternal brain and plasma levels of cocaine and benzoylecgonine following chronic subcutaneous administration of cocaine during gestation in rats. *Psychopharmacology* **97**:427–431.
- Spear LP and Heyser CJ (1992) Cocaine and the developing nervous system: laboratory findings, in *Maternal Substance Abuse and the Developing Nervous System* (Zagon IS and Slotkin TA, eds) pp 155–175, Academic Press, San Diego.
- Spear LP, Kirstein CL and Frambes NA (1989b) Cocaine effects on the developing nervous system: behavioral, psychopharmacological and neurochemical studies. *Ann N Y Acad Sci* **562**:290–307.
- Spitzer NC (1991) A developmental handshake: Neuronal control of ionic currents and their control of neuronal differentiation. *J Neurobiol* **22**:659–673.
- Spraggins YR, Seidler FJ and Slotkin TA (1994) Cocaine exacerbates hypoxia-induced cell damage in developing brain: Effects on ornithine decarboxylase activity and protein synthesis. *Biol Neonate* **66**:254–266.
- Stramba-Badiale M, Lazzarotti M and Schwartz PJ (1992) Development of cardiac innervation, ventricular fibrillation, and sudden infant death syndrome. *Am J Physiol* **263**:H1514–H1522.
- Sylvia AL, Seidler FJ and Slotkin TA (1989) Effect of transient hypoxia on oxygenation of the developing rat brain: relationships among haemoglobin saturation, autoregulation of blood flow and mitochondrial redox state. *J Dev Physiol* **12**:287–292.
- Tolson CM, Seidler FJ, McCook EC and Slotkin TA (1995) Does concurrent or prior nicotine exposure interact with neonatal hypoxia to produce cardiac cell damage? *Teratology* **52**:298–305.
- Van de Kamp JL and Collins AC (1994) Prenatal nicotine alters nicotinic receptor development in the mouse brain. *Pharmacol Biochem Behav* **47**:889–900.
- Wagner JP, Seidler FJ, Lappi SE, McCook EC and Slotkin TA (1995) Role of presynaptic input in the ontogeny of adrenergic cell signaling in rat brain: beta receptors, adenylate cyclase, and *c-fos* protooncogene expression. *J Pharmacol Exp Ther* **273**:415–426.

- Wagner JP, Seidler FJ, Schachat FH and Slotkin TA (1994) *Beta* adrenergic control of *c-fos* protooncogene expression in developing rat brain regions. *J Pharmacol Exp Ther* **269**:1292–1299.
- Wagner JP, Seidler FJ and Slotkin TA (1991) Presynaptic input regulates development of β -adrenergic control of rat brain ornithine decarboxylase: Effects of 6-hydroxydopamine or propranolol. *Brain Res Bull* **26**:885–890.
- Wang HY, Runyan S, Yadin E and Friedman E (1995) Prenatal exposure to cocaine selectively reduces D₁-dopamine receptor-mediated activation of striatal G_s proteins. *J Pharmacol Exp Ther* **273**:492–498.
- Wessler I, Kirkpatrick CJ and Racke K (1998) Non-neuronal acetylcholine, a locally acting molecule, widely distributed in biological systems: Expression and function in humans. *Pharmacol Ther* **77**:59–79.
- Whitaker-Azmitia PM (1991) Role of serotonin and other neurotransmitter receptors in brain development: basis for developmental pharmacology. *Pharmacol Rev* **43**:553–561.
- World Health Organization (1997) *Tobacco or Health: A Global Status Report*, World Health Organization, Geneva.
- Zahalka EA, Seidler FJ, Lappi SE, McCook EC, Yanai J and Slotkin TA (1992) Deficits in development of central cholinergic pathways caused by fetal nicotine exposure: differential effects on choline acetyltransferase activity and [³H]hemicholinium-3 binding. *Neurotoxicol Teratol* **14**:375–382.
- Zahalka EA, Seidler FJ, Yanai J and Slotkin TA (1993) Fetal nicotine exposure alters ontogeny of M₁-receptors and their link to G-proteins. *Neurotoxicol Teratol* **15**:107–115.
- Zuckerman B and Frank DA (1992) Prenatal cocaine and marijuana exposure: research and clinical implications, in *Maternal Substance Abuse and the Developing Nervous System* (Zagon IS and Slotkin TA, eds) pp 125–153, Academic Press, San Diego.
- Zuckerman B and Frank DA (1994) Prenatal cocaine exposure: nine years later. *J Pediatr* **124**:731–733.

Send reprint requests to: Dr. T.A. Slotkin, Box 3813/Dept. of Pharmacology, Duke University Medical Center, Durham, NC 27710.
